



EZO PRINT

RADIUS
OFFICE

info@radiusoffice.com
www.radiusoffice.com

EZO
BOARD

A modern office lounge area featuring walls covered in vertical wood panels with a herringbone pattern. Two purple armchairs with metal frames are positioned on either side of a white circular coffee table. A small white side table holds a vase of yellow flowers. A pendant light hangs from the ceiling. The floor is covered in a grey carpet.

MEET EZO PRINT



EzoPrint adds depth and texture to any wall, improves options ranging from materials that imitate architectural **acoustical comfort in any space, brings practicality and choices to more abstract or branded options, you can style to any architectural work. You can transform your environment with prints of favorite building materials, abstract designs or your own brand.** Do you have your own ideas for printing?

We want to collaborate with you on your project. Get

Add visual interest to any wall, while providing acoustic in touch with us to see what you'd like get printed on absorption, tackability and modern style. With design EzoBord.

EZO PRINTS

BRICK & STONE

CONCRETE



LARGE BRICK



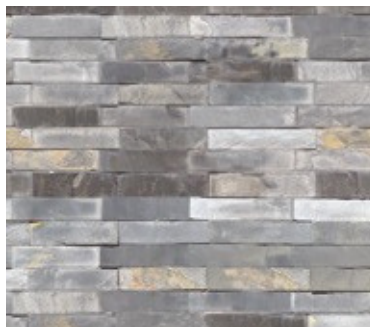
LEDGER 1



LEDGER 2



SLATE STONE



SMALL SLATE STONE



WIDTH

21" (533mm)

42" (1067mm)

42" (1067mm)

LENGTH

21" (533mm)

42" (1067mm)

90" (2286mm)

THICKNESS

$\frac{3}{8}$ " (9mm)

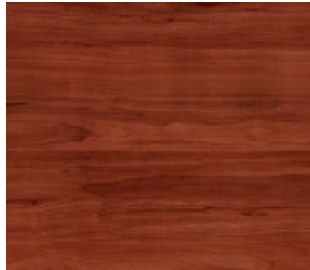
$\frac{3}{8}$ " (9mm)

$\frac{3}{8}$ " (9mm)

EZO PRINTS

WOOD

APPLE



ASH



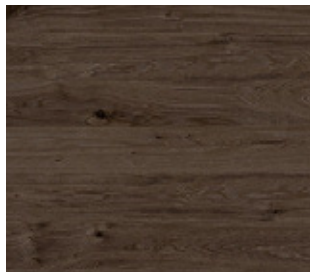
BIRCH SAND



CHERRY MATE



DARK OAK



GREY OAK



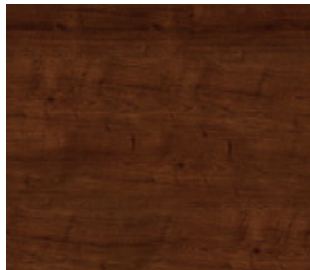
MARMAR MAPLE



WALNUT



WENGE



YELLOW OAK



WIDTH

21" (533mm)

42" (1067mm)

42" (1067mm)

LENGTH

21" (533mm)

42" (1067mm)

90" (2286mm)

THICKNESS

3/8" (9mm)

3/8" (9mm)

3/8" (9mm)

SPECIFICATIONS

EZO PRINT



Available in three tile sizes:

Sizes 21" (533mm) × 21" (533mm)

42" (1067mm) × 42" (1067mm)

42" (1067mm) × 90" (2286mm)

thickness

3/8" (9mm) | ±0.5mm

1/2" (12mm) | ±0.5mm

print information

- Water or latex based printing
- Little to no film thickness with 1-3 picolitre droplets
- Color Space: CMYK
- 600-1200 dpi print resolution
- Compliance: REACH, PVC Free, Nickel Free, FSC, UL Green Gold, Eco Mark Certification Number 141420017, UL ECOLOGO, AgBB Criteria, ASTM F793 Type II

COMPOSITIONACOUSTICS

100% pet (min. 50% recycled content) Refer to ASTM C423 test chart for specific absorption rates/frequency.

PRODUCT VARIANCES 3/8" (9mm): NRC 0.75 (subject to mounting conditions Variation in fiber mix and colour may occur. All products and geometrical properties)

will be supplied within commercial tolerances. 1/2" (12mm): NRC 0.85 (subject to mounting conditions and geometrical properties)

CLEANING(subject to mounting conditions and geometrical properties) Remove dust and dirt with a stiff plastic bristle brush.

Distilled water can be used to remove stains. Always use **ENVIRONMENT**

a soft, clean cloth and blot dry. Vacuuming works great Made of polyester fiber, min. 50% of which comes from as well, recycled water bottles which contributes to LEED MR Credit and BREEAM Health and Wellbeing, Materials

FIRE TESTINGpoints due to recycled content, acoustic performance, **north america:**and low emitting materials.

No VOC's: CDPH v1.2 and

ASTM E-84 Class A*REACH SVHC Compliant.

CAN ULC S102-10

europe and uk:USGBC LEED V4 CREDITS

EN13501-1: 2007While individual products do not 'earn' LEED credits, EzoBord can contribute to the following **LEED v4**

* Upon request, 1/2"(12mm) sheet material is treated with USA Credits. Please refer to the USGBC LEED credit guides *origin post-production flame retardant to Class A surface* for detailed requirements.

burning characteristics. Post sheet production FR treatment EQc9 for enhancing acoustic performance

does not contain any Red List Restricted Chemicals and MRC3 BPDO for sourcing of raw materials for recycled complies with California Proposition 65. Contact customer contribution

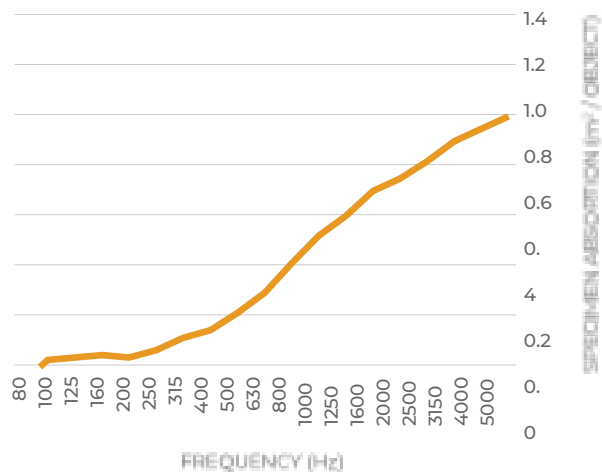
service for technical information, test data and safety data EQc6 interior lighting for surface reflectance (lighter sheets for flame retardantcolor options).

NOISE REDUCTION - 1/2" (12MM)

Constructed from
1/2" (12mm) EzoBord

SOUND ABSORPTION COEFFICIENTS (ASTM C423-17)

NRCSAA125250500100020004000		
0.400.390.030.070.21	0.51	0.760.95

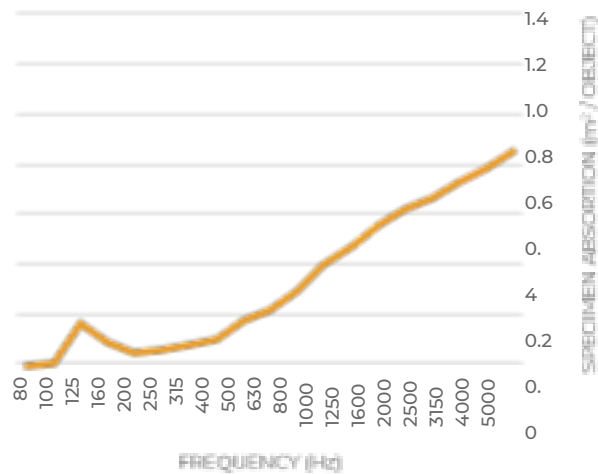


NOISE REDUCTION - 3/8" (9MM)

Constructed from
3/8" (9mm) EzoBord

SOUND ABSORPTION COEFFICIENTS (ASTM C423-17)

NRC	SAA	125	250	500	1000	2000	4000
0.300	0.31	0.080	0.060	0.160	0.390	0.620	0.79





RADIUS
OFFICE

info@radiusoffice.com
www.radiusoffice.com



RADIUS
OFFICE

info@radiusoffice.com
www.radiusoffice.com

ENVIRONMENT

Our Commitment to the Environment

In 2007, the last year global statistics of oil consumption were available, between 32 million and 54 million

There are approximately 50 billion water bottles/barrels of oil were used to produce the bottled water consumed around the world each year, and only about that was consumed in the USA alone. This energy is half of those get recycled. The rest end up in landfills, used to make the bottles from PET pellets (1 million littered through our neighborhoods, or floating in our tons in the USA), treat water, bottle the water, label the oceans. bottles, and transport the bottled water. Most of the

energy consumption occurs in the creation of the

Bottled water consumption has more than doubled bottles themselves. To help in the lifecycle of this plastic since 2000; in 2015 there was the equivalent of more product, we have chosen to manufacture our material than 5 bottles of water consumed for every person in so that it recycles these PET bottles. We are doing our the USA every single week. This, of course, means that part to reduce the waste. This acoustical and tackable the amount of oil required to produce the energy used material is made from PET bottles in a zero-waste for the water bottling process continues to grow. process with post industrial recycling. An environmentally friendly, sustainable, and waste reduced alternative to traditional acoustical/tackable material that looks great in any office, education, or

open space installation.

EzoBord is



- low VOC
- formaldehyde free

DID YOU KNOW...



For every pound of recycled PET bottles (approximately 23) energy use is reduced by 84% and greenhouse gas emissions are reduced by 71%.

PET BOTTLES



± 166 pet bottles are used to make one 3/8" 9mm thick EzoBord sheet.

± 318 pet bottles are used to make one 1/2" 12mm thick EzoBord sheet.



ezo

B O R D
