

A modern office interior featuring a desk with a large computer monitor displaying a mountain landscape. The desk is equipped with a white ergonomic office chair. The workspace is divided by grey fabric partitions. In the background, there are large windows and a long black light fixture hanging from the ceiling. The word "HOODY" is overlaid in large white letters across the center of the image.

HOODY

ezo
B O R D

RADIUS
O F F I C E

info@radiusoffice.com
www.radiusoffice.com



MEET HOODY





Instantly transform your open plan office space into individually separated, quiet workspaces with EzoBord's modular Hooded Desk divider system nicknamed "Hoody".

The 'Hoody' installs in seconds without the use of any tools and fits onto any new or existing desking/benching system. Compatible with virtually any manufacturer including all major office furniture brands.

CONFIGURATIONS

SINGLE HOODY

'Hoody's' can be added in seconds to any fixed height or adjustable height desks. No tools required.



LINKED HOODY'S

For fixed height workstations, infinitely link 'Hoody's' together on any fixed height bench system.



SINGLE HOODY

For use with height adjustable desking applications. Configurable in rows or back to back creating left/right and vertical social barriers. Add as many 'Hoody's' as you require.



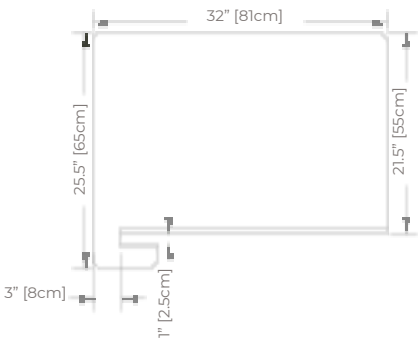


RADIUS
O F F I C E

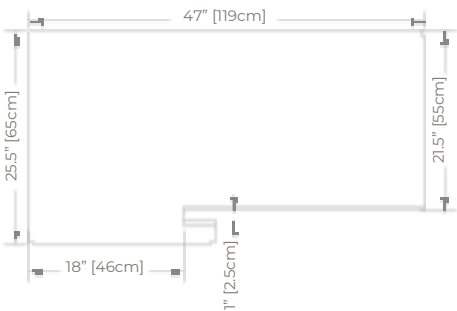
info@radiusoffice.com
www.radiusoffice.com

COMPONENTS

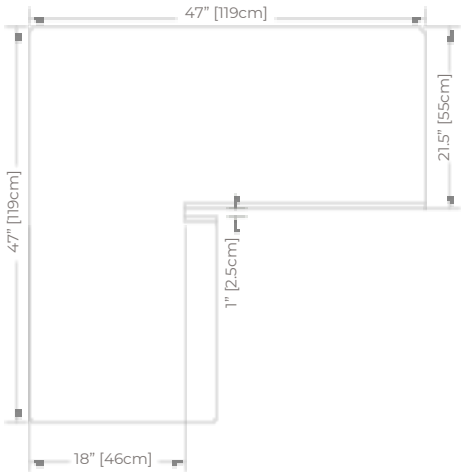
RETURN SCREEN
RTS-RS-243420



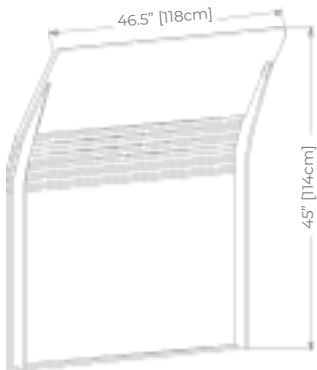
**EXTENDED
RETURN SCREEN**
RTS-EX-244820



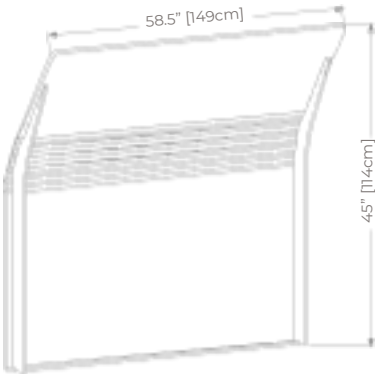
**FULL HEIGHT
RETURN SCREEN**
RTS-FH-484820



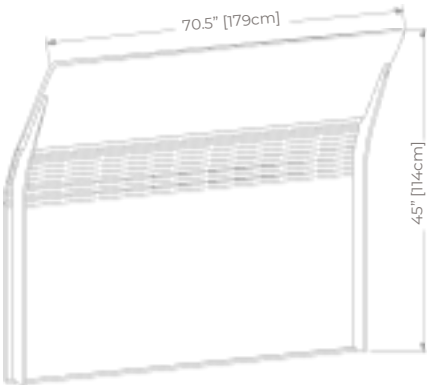
HOODY-TALL (48")
HDS-4845



HOODY - GRANDE (60")
HDS-6045

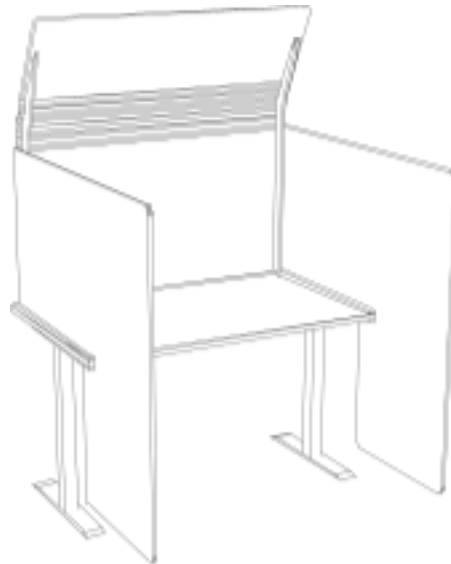


HOODY - VENTI (72")
HDS-7245



SPECIFICATIONS

HOODY



COMPOSITIONACOUSTICS

100% pet (min. 50% recycled content)Refer to ASTM C423 test chart for specific absorption rates/frequency.

THICKNESS ½" (12mm): NRC 0.85 (subject to mounting conditions
1/2" (12mm) | ±0.5mm and geometrical properties)

HARDNESSENVIRONMENT

60-65 (Shore C)Made of polyester fiber, min. 50% of which comes from recycled water bottles which contributes to LEED MR

FIRE TESTINGCredit and BREEAM Health and Wellbeing, Materials
north america:points due to recycled content, acoustic performance,

ASTM E-84 Class A*and low emitting materials. No VOC's: CDPH v1.2 and
CAN ULC S102-10REACH SVHC Compliant.

europa and uk:

EN13501-1: 2007USGBC LEED V4 CREDITS

While individual products do not 'earn' LEED credits,

CLEANING AND MITIGATION OF EzoBord can contribute to the following LEED v4

MICROBIAL / VIRAL CONTAMINATIONCredits. Please refer to the USGBC LEED credit guides

Proper PPE must be worn ie. bleach odor respirator, for detailed requirements.

protective eyewear and gloves. EQc9 for enhancing acoustic performance

1. Mix equal amount of water and bleach (5.25% sodium MRC3 BPDO for sourcing of raw materials for recycled hypochlorite solution).contribution

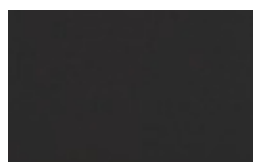
2. Use a hand spray applicator to mist the surface of EQc6 interior lighting for surface reflectance (lighter product, apply generously.color options).

3. Allow treated surface to air dry.

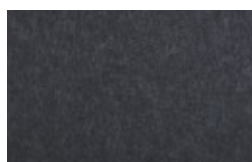
** Upon request, 1/2"(12mm) sheet material is treated with USA origin post-production flame retardant to Class A surface burning characteristics. Post sheet production FR treatment does not contain any Red List Restricted Chemicals and complies with California Proposition 65. Contact customer service for technical information, test data and safety data sheets for flame retardant*

COLOR & FINISHES

COLORS 3/8" (9MM)



PURE BLACK
PB09



CHARCOAL GRAY
CG06



EBONY SLATE
ES07



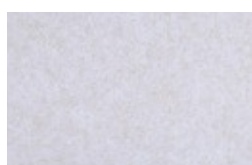
DARK GRAY
DG34



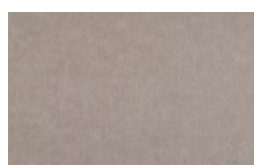
SILVER GRAY
SG04



CLASSIC WHITE
CW04



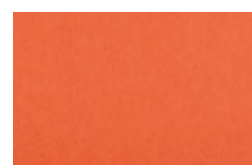
LIGHT BEIGE
LB01



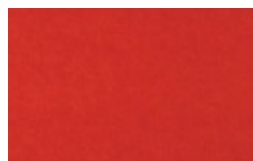
DESERT SAND
DS10



SUNNY DAYS
SD18



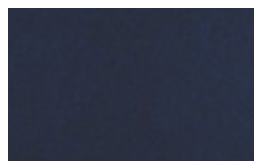
TIGER ORANGE
TO24



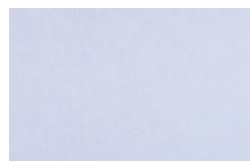
RUBY RED
RR28



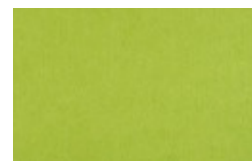
DEEP PURPLE
DP30



MIDNIGHT NAVY
MN12

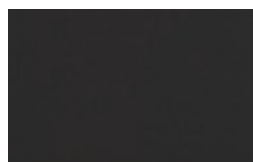


POLAR ICE
PI14

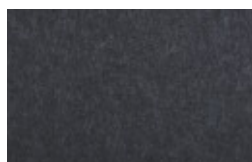


GREEN APPLE
GA41

COLORS 1/2" (12MM)



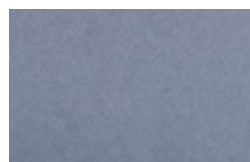
PURE BLACK
PB09



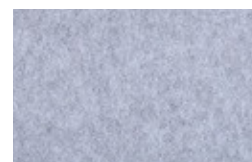
CHARCOAL GRAY
CG06



BOLD GRAY
BG07



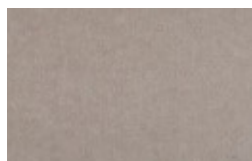
ELEPHANT GRAY
EG11



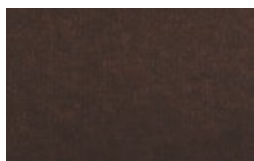
SILVER GRAY
SG04



CLASSIC WHITE
CW04



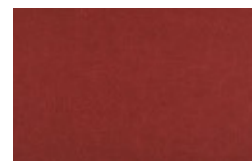
DESERT SAND
DS10



TREE BARK
TB35



SUNNY DAYS
SD18



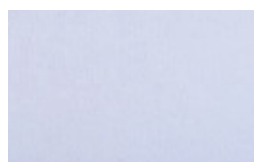
BRICK RED
BR34



GRAPE VINE
GV36



ROYAL BLUE
RB08



POLAR ICE
PI14



OCEAN BLUE
OB14



MOSS GREEN
MG10



ENVIRONMENT

Our Commitment to the Environment

In 2007, the last year global statistics of oil consumption were available, between 32 million and 54 million

There are approximately 50 billion water bottles/barrels of oil were used to produce the bottled water consumed around the world each year, and only about that was consumed in the USA alone. This energy is half of those get recycled. The rest end up in landfills, used to make the bottles from PET pellets (1 million littered through our neighborhoods, or floating in our tons in the USA), treat water, bottle the water, label the oceans, bottles, and transport the bottled water. Most of the

energy consumption occurs in the creation of the

Bottled water consumption has more than doubled bottles themselves. To help in the lifecycle of this plastic since 2000; in 2015 there was the equivalent of more product, we have chosen to manufacture our material than 5 bottles of water consumed for every person in so that it recycles these PET bottles. We are doing our the USA every single week. This, of course, means that part to reduce the waste. This acoustical and tackable the amount of oil required to produce the energy used material is made from PET bottles in a zero-waste for the water bottling process continues to grow. process with post industrial recycling. An

environmentally friendly, sustainable, and waste reduced alternative to traditional acoustical/tackable material that looks great in any office, education, or

open space installation.

EzoBord is



- low VOC
- formaldehyde free

DID YOU KNOW...



For every pound of recycled PET bottles (approximately 23) energy use is reduced by 84% and greenhouse gas emissions are reduced by 71%.

PET BOTTLES



± 166 pet bottles are used to make one 3/8" 9mm thick EzoBord sheet.

± 318 pet bottles are used to make one 1/2" 12mm thick EzoBord sheet.

