

# GEO CLOUD

RADIUS  
OFFICE

[info@radiusoffice.com](mailto:info@radiusoffice.com)  
[www.radiusoffice.com](http://www.radiusoffice.com)

EZO  
BOARD



A modern office lobby with a polished floor, a black leather sofa, and two turnstiles. A large potted plant is in the background. Two circular planters, one green and one black, hang from the ceiling. A staircase with a metal railing is on the left.

**MEET  
GEO CLOUD**

**RADIUS**  
OFFICE

info@radiusoffice.com  
www.radiusoffice.com



**EzoBord Geo Clouds provide an elegant addition to Stylish EzoBord Geo Clouds are a series of sound absorbing suspended panels that redefine open interior spaces. use of different geometric shapes and a wide array of standard colors.**

Geo Clouds are available in a wide variety of colors,

profiles and shapes with custom shapes and prints also

A new generation surface material that both absorbs noise and is fully customizable. Clouds are adjustable to various heights and angles and

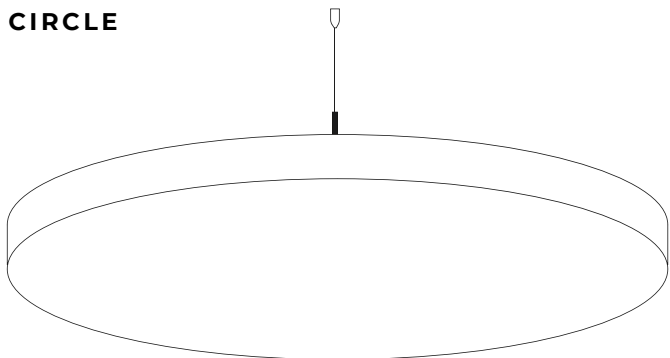
can be installed from deck, ceilings, drywall, standard T

bar suspension systems or mounted to walls.

Made with recycled plastic water bottles.

# GEO CLOUD

## CIRCLE



### LENGTH

30" (762mm)

41"

(1041mm)

### WIDTH

30" (762mm)

41"

(1041mm)

### HEIGHT

1" (25mm)

1" (25mm)

## SQUARE



### LENGTH

31" (787mm)

41"

(1041mm)

### WIDTH

31" (787mm)

41"

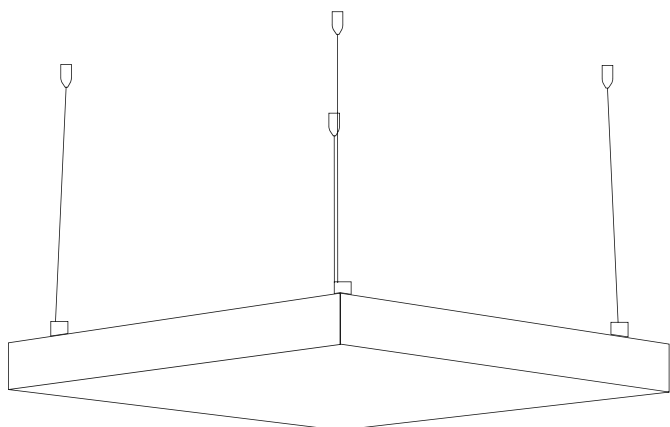
(1041mm)

### HEIGHT

2" (51mm)

2" (51mm)

## DIAMOND



### LENGTH

13½" (343mm)

20½"

(521mm)

### WIDTH

31" (787mm)

41"

(1041mm)

### HEIGHT

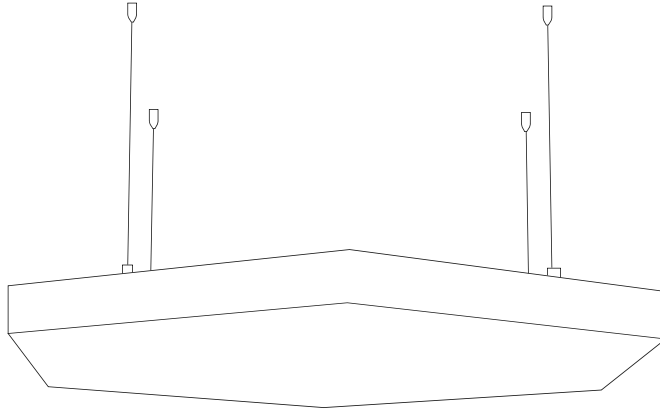
2" (51mm)

2" (51mm)



# GEO CLOUD

## HEXAGON



### LENGTH

27"  
(659mm)  
36" (914mm)

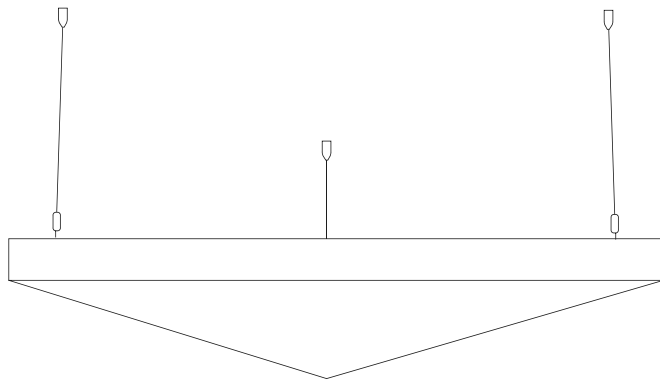
### WIDTH

31" (787mm)  
41"  
(1041mm)

### HEIGHT

2" (51mm)  
2" (51mm)

## TRIANGLE



### LENGTH

26" (660mm)  
35½" (902mm)

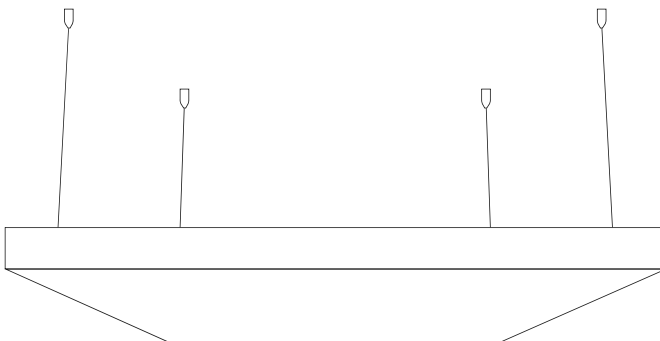
### WIDTH

31" (787mm)  
41"  
(1041mm)

### HEIGHT

2" (51mm)  
2" (51mm)

## TRAPEZOID



### LENGTH

12" (305mm)  
15½" (394mm)

### WIDTH

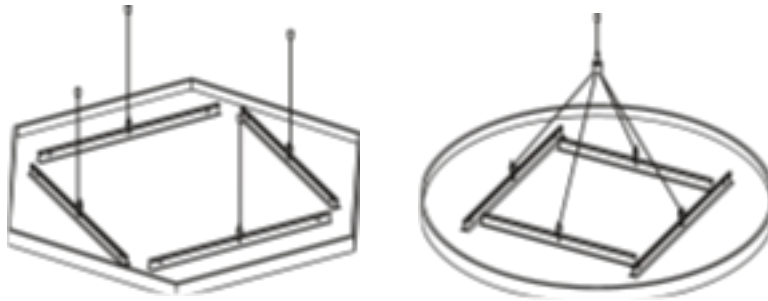
31" (787mm)  
41"  
(1041mm)

### HEIGHT

2" (51mm)  
2" (51mm)

# SPECIFICATIONS

## GEO CLOUD



### SIZES

6 standard shapes available in 2 sizes.

31" (787mm) × 31" (787mm) maximum  
41" (1041mm) × 41" (1041mm) maximum  
height 2" (51mm)

thickness 3/8" (9mm) | ±0.5mm ;  
1/2" (12mm) | ±0.5mm

Custom graphics and textures can  
be printed on clouds

---

## COMPOSITION & ACOUSTICS

100% pet (min. %50 recycled content) Refer to ASTM C423 test chart for specific absorption rates/frequency.

**PRODUCT VARIANCES** 3/8" (9mm): NRC 0.75 (subject to mounting conditions Variation in fiber mix and colour may occur. All products and geometrical properties) will be supplied within commercial tolerances. 1/2" (12mm): NRC 0.85 (subject to mounting conditions and geometrical properties)

**CLEANING** (subject to mounting conditions and geometrical properties) Remove dust and dirt with a stiff plastic bristle brush.

Distilled water can be used to remove stains. Always use **ENVIRONMENT**

a soft, clean cloth and blot dry. Vacuuming works great Made of polyester fiber, min. 50% of which comes from as well. recycled water bottles which contributes to LEED MR Credit and BREEAM Health and Wellbeing, Materials

**FIRE TESTING** points due to recycled content, acoustic performance, **north america:** and low emitting materials.

No VOC's: CDPH v1.2 and

ASTM E-84 Class A\* REACH SVHC Compliant.

CAN ULC S102-10

### europa and uk: USGBC LEED V4 CREDITS

EN13501-1: 2007 While individual products do not 'earn' LEED credits, EzoBord can contribute to the following LEED v4

\* Upon request, 1/2" (12mm) sheet material is treated with USA Credits. Please refer to the USGBC LEED credit guides *origin post-production flame retardant to Class A surface* for detailed requirements.

*burning characteristics. Post sheet production FR treatment EQc9 for enhancing acoustic performance*

*does not contain any Red List Restricted Chemicals and MRc3 BPDO for sourcing of raw materials for recycled complies with California Proposition 65. Contact customer contribution*

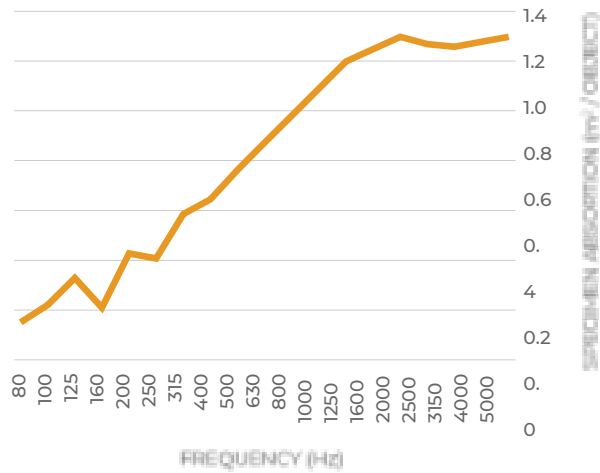
*service for technical information, test data and safety data EQc6 interior lighting for surface reflectance (lighter sheets for flame retardant color options).*

## NOISE REDUCTION - 3/8" (9MM)

Constructed from  
3/8" (9mm) Eco-Bord  
Closedback

### SOUND ABSORPTION COEFFICIENTS (ASTM C423-17)

NRC	SAA	125	250	500	1000	2000	4000
0.90	0.91	0.25	0.48	0.77	1.10	1.28	1.29

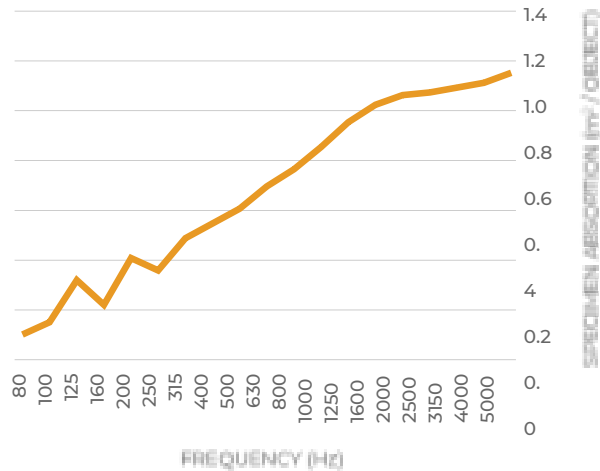


## NOISE REDUCTION - 1/2" (12MM)

Constructed from  
1/2" (12mm) Eco-Bord  
Openback

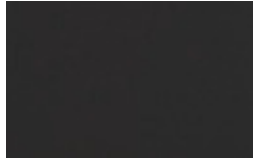
### SOUND ABSORPTION COEFFICIENTS (ASTM C423-17)

NRC	SAA	125	250	500	1000	2000	4000
0.75	0.74	0.23	0.42	0.62	0.86	1.06	1.13

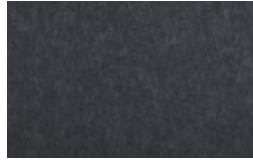


# COLOR & FINISHES

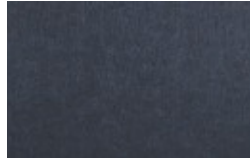
COLORS 3/8" (9MM)



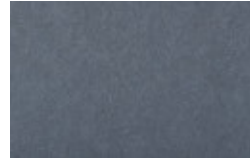
**PURE BLACK**  
PB09



**CHARCOAL GRAY**  
CG06



**EBONY SLATE**  
ES07



**DARK GRAY**  
DG34



**SILVER GRAY**  
SG04



**CLASSIC WHITE**  
CW04



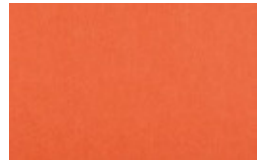
**LIGHT BEIGE**  
LB01



**DESERT SAND**  
DS10



**SUNNY DAYS**  
SD18



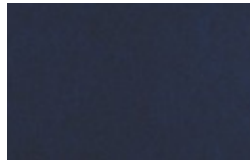
**TIGER ORANGE**  
TO24



**RUBY RED**  
RR28



**DEEP PURPLE**  
DP30



**MIDNIGHT NAVY**  
MN12

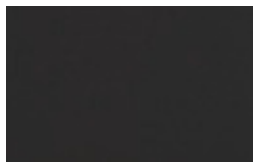


**POLAR ICE**  
PI14

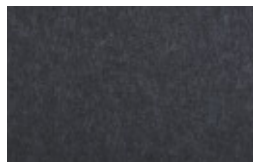


**GREEN APPLE**  
GA41

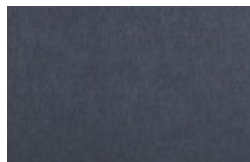
## COLORS 1/2" (12MM)



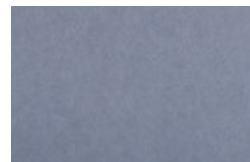
**PURE BLACK**  
PB09



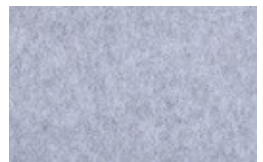
**CHARCOAL GRAY**  
CG06



**BOLD GRAY**  
BG07



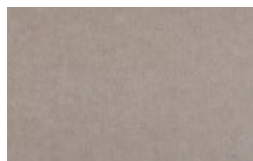
**ELEPHANT GRAY**  
EG11



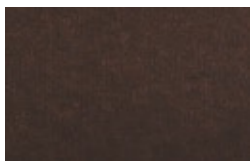
**SILVER GRAY**  
SG04



**CLASSIC WHITE**  
CW04



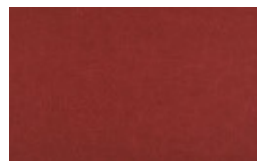
**DESERT SAND**  
DS10



**TREE BARK**  
TB35



**SUNNY DAYS**  
SD18



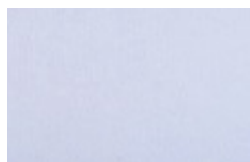
**BRICK RED**  
BR34



**GRAPE VINE**  
GV36



**ROYAL BLUE**  
RB08



**POLAR ICE**  
PI14



**OCEAN BLUE**  
OB14



**MOSS GREEN**  
MG10





# ENVIRONMENT

Our Commitment to the Environment

In 2007, the last year global statistics of oil consumption were available, between 32 million and 54 million

There are approximately 50 billion water bottles/barrels of oil were used to produce the bottled water consumed around the world each year, and only about that was consumed in the USA alone. This energy is half of those get recycled. The rest end up in landfills, used to make the bottles from PET pellets (1 million littered through our neighborhoods, or floating in our tons in the USA), treat water, bottle the water, label the oceans. bottles, and transport the bottled water. Most of the

energy consumption occurs in the creation of the

Bottled water consumption has more than doubled bottles themselves. To help in the lifecycle of this plastic since 2000; in 2015 there was the equivalent of more product, we have chosen to manufacture our material than 5 bottles of water consumed for every person in so that it recycles these PET bottles. We are doing our the USA every single week. This, of course, means that part to reduce the waste. This acoustical and tackable the amount of oil required to produce the energy used material is made from PET bottles in a zero-waste for the water bottling process continues to grow. process with post industrial recycling. An environmentally friendly, sustainable, and waste reduced alternative to traditional acoustical/tackable material that looks great in any office, education, or

open space installation.

## ezoBord is



- low VOC
- formaldehyde free

## DID YOU KNOW...



For every pound of recycled PET bottles (approximately 23) energy use is reduced by 84% and greenhouse gas emissions are reduced by 71%.

## PET BOTTLES



± 166 pet bottles are used to make one 3/8" 9mm thick EzoBord sheet.

± 318 pet bottles are used to make one 1/2" 12mm thick EzoBord sheet.







---

# EZO B O R D

---