

# Seating book

profim

Exclusively  
distributed  
in the UK by:

Spacestor 



Welcome to Profim.

Exclusively  
distributed  
in the UK by:

**Spacestor** 





|                       | executive chairs | task chairs | visitor chairs | soft seating | tables and coat stands |
|-----------------------|------------------|-------------|----------------|--------------|------------------------|
| Ariz                  |                  |             | 60-61          |              |                        |
| Bit                   |                  |             | 62-63          |              |                        |
| Fan                   |                  |             | 64-65          | 86-87        |                        |
| Hover                 |                  |             |                | 88-89        | 130-131                |
| LightUp               |                  | 42-45       |                |              |                        |
| Motto                 |                  | 46-47       |                |              |                        |
| MyTurn                | 32-35            | 48-49       | 66-67          |              |                        |
| MyTurn Sofa           |                  |             |                | 90-91        | 132-133                |
| Nu                    |                  |             | 68-69          | 92-95        |                        |
| October               |                  |             |                | 96-97        | 134-135                |
| Pelikan               |                  |             |                | 98-101       |                        |
| Raya                  |                  | 50-51       | 70-71          |              |                        |
| Sensi                 |                  |             | 72-73          |              | 136-137                |
| Seven                 |                  |             |                |              | 142-143                |
| SoftBox               |                  |             |                | 102-105      |                        |
| Sorriso               |                  |             |                | 106-107      |                        |
| Tables SF/SH/SR/SV/SW |                  |             |                |              | 138-139                |
| UpDown                |                  |             |                | 108-111      |                        |
| Vancouver Box         |                  |             |                | 112-113      |                        |
| Vancouver Lite        |                  |             |                | 114-115      |                        |
| Vancouver Oto         |                  |             |                | 116-117      |                        |
| Vancouver Tables      |                  |             |                |              | 140-141                |
| Wall In               |                  |             |                | 118-121      |                        |
| Wyspa                 |                  |             |                | 122-125      |                        |
| Xenon                 | 36-37            | 52-53       | 74-75          |              |                        |
| Xenon Net             |                  | 54-55       | 76-77          |              |                        |
| Zoo                   |                  |             | 78-81          |              |                        |



# Meet Profim

From the very beginning, our main focus has been on company development and product quality. State-of-the-art technologies, original designs, and elaborate details form the basis of our reliability. We can surprise you with how well thought-out and innovative an office chair can be, how a well-designed piece of furniture can affect the user's performance and increase their work satisfaction. The ideal seat does not waste your time with a lack or excess of features – it lets you focus on the tasks ahead.

## Made in Poland

The Profim factory is located in Turek, central Poland, and is our sole manufacturing site. We work every day to develop the quality of our products. Here we find ideal conditions: highly skilled and competent personnel.





# 100 000 seats

This is the number of pieces we produce monthly, each created with the highest precision. Production is supervised by 1800 employees over a total production and warehousing space of 50 000 square metres. We were the first Polish manufacturer of office chairs to receive ISO 9001 quality management certificate. We implemented ISO 14001 Environmental Management System.

# 1 800

employees working in company

# 50 000 m<sup>2</sup>

total production and warehousing space













## Our values

Our success has been made possible thanks to our employees, whose reliability, creativity and determination cannot be underestimated. Thanks to our staff it is possible to fully use manufacturing capacity of modern equipment, strictly control quality and, above all, develop the company. Our mission is to determine standards of healthy and effective seating. Since our future relies on development, innovation is a key concept for Profim.

# Ecology and the Environment

In our operations we follow the sustainability principle. We operate in a responsible manner for the benefit of our customers, employees, suppliers, and the local community, but we always respect the environment. In order to achieve our goals, we have implemented an Environmental Management System based on the ISO 14001 standard, which allows for a comprehensive approach to ecology.



## Design and Development

A carefully considered design means a timeless and robust product. Designed in order to minimise the amount of hazardous substances used for production.



## Materials and Components

Materials and raw materials used for production cannot contain hazardous compounds, harmful to humans and the environment. We work closely with our suppliers to reduce our collective impact on the environment. We are FSC® certified.



## Production and Waste Management

We use environmentally-friendly technologies, we optimise and reduce electricity consumption. Production waste is sorted for recycling and only sent to authorised parties.



### Delivery Logistics and Transport

We manage the transport fleet on our own optimizing the use of trucks delivering our products. We analyze route selection in transport in order to minimise fuel consumption.



### Using the Finished Product

Our chairs can be used for years, due to their high quality and durability. Using them does not cause any effects that could be harmful to the environment or human health.



### Recycling Used Products

Chairs can be dismantled with standard, generally available tools. The cardboard packaging is 100% recyclable.





## Quality

The high quality of our products is possible thanks to our modern technological facilities and complete control of the entire production process. Testing in our factory laboratory enables us to implement even our most innovative ideas. A chair should be comfortable, ensure healthy posture and be suitably adjustable, allowing for an individual adjustment according to the user's needs.

## Design

For us, designing is about more than just the style and originality of our products. It is also a way of ensuring an appropriate interaction between the product and the user. Only a good, well thought-out design created by an experienced and skilled designer, having gone through our strict testing, can become an excellent product.







**Top from the left**

Paul Brooks  
Hilary Birkbeck  
Christopher Schmidt / ITO Design  
Mugi Yamamoto / ITO Design  
Carlo Shayeb / ITO Design

**Middle from the left**

Piotr Kuchciński  
Mac Stopa  
Martin Ballendat  
Jarosław Szymański / Studio 1:1  
Wolfgang Deisig  
Tomek Rygalik / Studio Rygalik

**Bottom from the left**

Tomasz Augustyniak  
Grzegorz Olech  
Ronald Straubel







## Designers

From the beginning of the company's operation, we have developed dozens of unique collections, working with an international group of renowned designers. Our innovative technologies and experienced team of engineers enable us to implement even the most complex forms.

# Development process

Each new project goes through the consecutive stages of detailed development process. Our strength lies in the efficient cooperation of people engaged on many levels of a project: from the designer's concept to the first prototypes and the final product. Only after obtaining positive test results and meeting functional criteria is a chair fit for serial production. At the end, the optimum production line is prepared.











## Machine park

Our machine park is one of the newest in this part of Europe and allows us to implement the latest industry ideas. We operate an automated galvanization line using the environmental friendly Chromium (III), cutters to precise leather cutting, 3D lasers and bending machines, as well as CNC machines that allow us to optimise the manufacturing processes.











# Executive chairs

Modern companies with an utmost care for their image are increasingly drawn towards minimalistic design. Simple forms and patterns, optimised use of resources, equipment and materials are more and more often the hallmark of the business landscape.

For a modern manager, the office still fulfils mainly representative function. Ideally, it can be easily transformed into ergonomic space where teams work effectively.

An elegant office is a flagship of the company image.



# Executive chairs



MyTurn 32-35



Xenon 36-37

# MyTurn

Design: Paul Brooks





# MyTurn

Design: Paul Brooks





MYTURN 10Z CHROME O



MYTURN 10S CHROME O



Precise leather finishes  
combined with  
aluminium elements.

Two types of mechanisms:  
Synchro and Rocker.



# Xenon

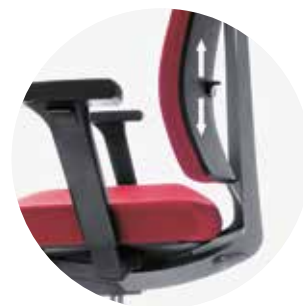
Design: ITO Design







XENON 11STL CHROME P59PU



Innovative solution:  
additional depth adjustable  
lumbar support.

Two types of ergonomic  
mechanisms: Synchro  
and self-weighing  
automatic Synchro.





# Task chairs

Creating a comfortable environment for intensive work is not an easy task. Apart from being ergonomic, every-day items used by the staff should also be wear-resistant and tasteful. A piece of furniture is often multi-purpose having a variety of arrangement options at the same time.

Light materials, full range of set-up options and new technologies implemented are the must-have for perfect chair.

The goal is a seamless interaction between the user and the furniture providing comfort.



# Task chairs



LightUp 42-45



Motto 46-47



MyTurn 48-49



Raya 50-51



Xenon 52-53



Xenon Net 54-55

# LightUp

Design: ITO Design

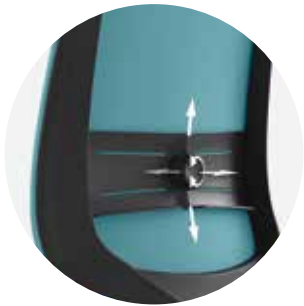






# LightUp

Design: ITO Design



Two types of ergonomic mechanisms: Synchro and self-weighting automatic Synchro.

Multi-adjustable lumbar support.



LIGHTUP 230SFL BLACK P61PU



LIGHTUP 250SFL BLACK P60PU





# Motto



Fully upholstered, height-adjustable backrest. Flexible inner frame enables easy backward and side backrest tilt.



MOTTO 10STL BLACK P60PU



MOTTO 10SFL BLACK P60PU





# MyTurn

Design: Paul Brooks

Seat construction designed to ensure exceptional comfort.

Two types of mechanisms: Synchro and Rocker.



MYTURN 20Z CHROME O



MYTURN 20S CHROME PU







# Raya

Design: Grzegorz Olech



Two types of rear part of  
the backrest finishing:  
plastic or upholstery.

Height adjustable backrest.



RAYA 21S BLACK P45PU



RAYA 21SL BLACK P45PU



RAYA 23SL BLACK P51PU



# Xenon

Design: ITO Design

DIAMENT  
MEBLARSTWA  
2014

top  
design  
award  
2014



Innovative solution:  
additional depth adjustable  
lumbar support.

Two types of ergonomic  
mechanisms: Synchro and self-  
weighing automatic Synchro.



XENON 10STL BLACK P58PU



XENON 20SL BLACK P58PU







# Xenon Net

Design: ITO Design

DIAMENT  
MEBLARSTWA  
2014

top  
design  
award  
2014



Innovative solution:  
additional depth adjustable  
lumbar support.

Two types of ergonomic  
mechanisms: Synchro and self-  
weighing automatic Synchro.



XENON NET 101SFL BLACK P59PU



XENON NET 101STL BLACK P59PU









# Visitor chairs

The roles of conference, meeting rooms and team work spaces have changed over the last couple of years. It is not uncommon for training or conference participants to become active during the event, which has raised the need for more flexibility. It is often necessary to quickly rearrange the space into multi-functional workplaces.

Conference chairs should allow full personalisation and selection of finishing materials, as well as variety of options for space arrangement.

Quickly modifiable – unusually effective.



# Visitor chairs



Ariz 60-61



Bit 62-63



Fan 64-65



MyTurn 66-67



Nu 68-69



Raya 70-71



Sensi 72-73



Xenon 74-75



Xenon Net 76-77



Zoo 78-81

# Ariz



Multi-functional high stacking chair with linking system.

Different types of backrest:  
plastic (6 colours), mesh  
or upholstery.

Additional accessories: writing  
tablet and newspapers basket.



|         |     |      |    |
|---------|-----|------|----|
| 550V    | x15 | 560V | x5 |
| 550V 2P | x10 | 570V | x5 |
| 555V    | x15 | 575V | x5 |
| 555V 2P | x10 | CV   | x2 |



|            |     |      |     |
|------------|-----|------|-----|
| 550V (+2P) | x45 | 570V | x20 |
| 555V (+2P) | x45 | 575V | x20 |
| 560V       | x20 | CV   | x2  |



ARIZ 550V CHROME



ARIZ 555V SATIN 2P

Available plastic finishes







ARIZ 550V CHROME 2P



ARIZ 570V CHROME B+K



ARIZ 550V CHROME 2P



ARIZ 570CV SATIN



ARIZ 560V CHROME



ARIZ 550V CHROME

# Bit



BIT 560H CHROME



BIT 550V CHROME 2P



BIT 575V BLACK



BIT 575H CHROME 2P

Two types of stacking frame:  
4-legged and cantilever.

Different types of backrest:  
plastic, mesh or upholstery.



H (+2P) x5  
V (+2P) x3





# Fan

Design: Piotr Kuchciński



Precise stitching in two types: contrastive or in upholstery colour.

In 10R version gaslift with auto-return.

Additional accessories: seat cushion.



FAN 10R CHROME



FAN 10V SATIN



FAN 10HW WOOD



FAN 10H CHROME + CUSHION



# MyTurn

Design: Paul Brooks



MYTURN 21VN CHROME O

Exceptionally elegant and comfortable managerial armchair, in a swivel (with low or high backrest) or cantilever version.

Precise aluminium details and aesthetic finishing also from the bottom.



MYTURN 10FZ CHROME O



MYTURN 20F CHROME O

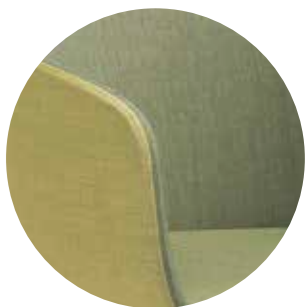






# Nu

Design: Paul Brooks



NU 20HS SATIN



NU 20F CHROME



NU 20R CHROME



NU 20V1 SATIN

A compact chair of a simple form made using advanced technology of moulded foam.

Two shell sizes (small – 20 and big – 10) and five types of bases to choose from.





# Raya

Design: Grzegorz Olech



RAYA 23H BLACK P46PU CASTORS



RAYA 21H BLACK GLIDES

Two types of rear part of the  
backrest finishing: plastic  
or upholstery.



RAYA 21V BLACK



RAYA 21V BLACK P46PU

# Sensi



SENSI K1CH CHROME



SENSI K1H CHROME



SENSI K2H CHROME 2P

Wooden monoshell, with or without upholstery pads or in fully upholstered version.

Construction of chair with armrests allows easy hanging on table top.



|           |    |           |    |
|-----------|----|-----------|----|
| K1H (+2P) | x5 | K3H (+2P) | x5 |
| K2H (+2P) | x5 | K4H (+2P) | x5 |



SENSI K3H SATIN 2P



SENSI K4H CHROME

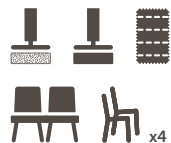




# Xenon

Design: ITO Design

Three types of frame:  
4-legged, non-stackable  
cantilever or stackable  
cantilever.



XENON 20H CHROME 2P



XENON 20V CHROME 2P



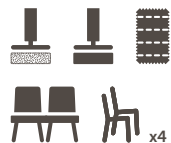




# Xenon Net

Design: ITO Design

Three types of frame:  
4-legged, non-stackable  
cantilever or stackable  
cantilever.



XENON NET 20H CHROME 2P



XENON NET 20H CHROME 2P





XENON NET 20H CHROME 2P



XENON NET 20V CHROME 2P



XENON NET 20V CHROME 2P



XENON NET 20V CHROME 2P

# Zoo

Design: Paul Brooks





reddot design award  
honourable mention 2015



ZOO 522H CHROME



ZOO 522VN CHROME 2P

Multi-functional chair  
with dozens of varied  
configurations: 4-legged or  
cantilever frame, with a plastic  
or upholstered seat, a plastic,  
mesh or upholstered backrest,  
with or without armrests.

Additional features: chairs  
and row linking system  
(anti-panic), folded writing  
tablet, chair and row  
numbering, benches.



|                |                |
|----------------|----------------|
| 522H (+2P) x10 | 502V (+2P) x5* |
| 522V (+2P) x8  | 500H (+2P) x5* |
| 525H (+2P) x10 | 500V (+2P) x5* |
| 525V (+2P) x8  | 505H (+2P) x5* |
| 502H (+2P) x5* | 505V (+2P) x5* |



|               |                |
|---------------|----------------|
| 522H x12      | 502H (+2P) x5* |
| 522H 2P x10   | 502V (+2P) x5* |
| 522V (+2P) x8 | 500H (+2P) x5* |
| 525H x12      | 500V (+2P) x5* |
| 525H 2P x10   | 505H (+2P) x5* |
| 525V (+2P) x8 | 505V (+2P) x5* |

\* Chairs upholstered in Valencia – 3 pcs.



Available plastic finishes



# Zoo

Design: Paul Brooks



ZOO 522H CHROME



ZOO 525VN CHROME 2P



ZOO 502H CHROME 2P



ZOO 500VN CHROME 2P



ZOO 522L3 SATIN







# Soft seating

The first touchpoint between a potential client, a partner or a guest and the company requires a well-thought design. Nice to the touch durable fabrics available in eye-pleasing colours are the way to create a cosy interior that makes everyone feel at home.

Sofas and modular systems help to turn open areas into leisure spaces or team work open plan offices. To be effective, they must be as comfortable as they come – as a place for both; for a relaxing break and creative teamwork.

The harmony of comfort and design.



# Soft seating



Fan 86-87



Hover 88-89



MyTurn Sofa 90-91



Nu 92-95



October 96-97



Pelikan 98-101



SoftBox 102-105



Sorriso 106-107



UpDown 108-111



Vancouver Box 112-113



Vancouver Lite 114-115



Vancouver Oto 116-117



Wall In 118-121



Wyspa 122-125

# Fan

Design: Piotr Kuchciński



FAN 20V SATIN

Precise stitching in two types: contrastive or in upholstery colour.





# Hover

Design: Tomek Rygalik, Studio Rygalik



HOVER 10 RAL 1023



HOVER 20 RAL 1023

The seat cushion adds to the comfort.

Frame in attractive RAL-colours.



HOVER 25 RAL 1023

Available RAL colours

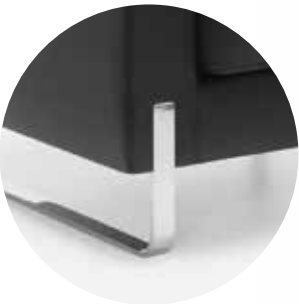






# MyTurn Sofa

Design: Paul Brooks



MYTURN 10H SATIN



MYTURN 20V CHROME



Two types of frame cantilever and legs.



MYTURN 30V CHROME



# Nu

Design: Paul Brooks



NU 11R CHROME



NU 11F CHROME

Two types of base: round (metal) and 4-star aluminium base.

Option of mixing different colours of upholstery on the seat cushion, inner and outer part of the shell.





# Nu

Design: Paul Brooks



Perfect finishing in every detail including the bottom part of the seat.

Version 10FZ with Rocker mechanism enables tilting of the shell.



NU 10V3 SATIN



NU 10FZ CHROME





# October

Design: Hilary Birkbeck



OCTOBER 12 WOOD



OCTOBER 22 WOOD



OCTOBER 32 WOOD



OCTOBER 11 CHROME



OCTOBER 21 CHROME



OCTOBER 31 CHROME

Comfortable quilted cushions on the seat and the backrest, adorned with buttons.

Two types of legs: wooden and metal.



OCTOBER 10 CHROME



OCTOBER 20 CHROME



# Pelikan

Design: Mac Stopa / M. Ballendat



Two types of base:  
round (metal) and 4-star  
aluminium base.

Soft touch polyurethane  
armrests in five colours.



Available armrests colours



PELIKAN 10F CHROME 2P



PELIKAN 10R CHROME 2P



# Pelikan

Design: Mac Stopa / M. Ballendat



PELIKAN 10H SATIN



PELIKAN 10V SATIN 2P



PELIKAN 10V SATIN



PELIKAN 10HC SATIN 2P

The special space near the bottom provides place for a laptop or a bag.



Available armrests colours







# SoftBox

Design: Paul Brooks



Precise frame and shell connection.

Two types of frame: wooden or aluminium.

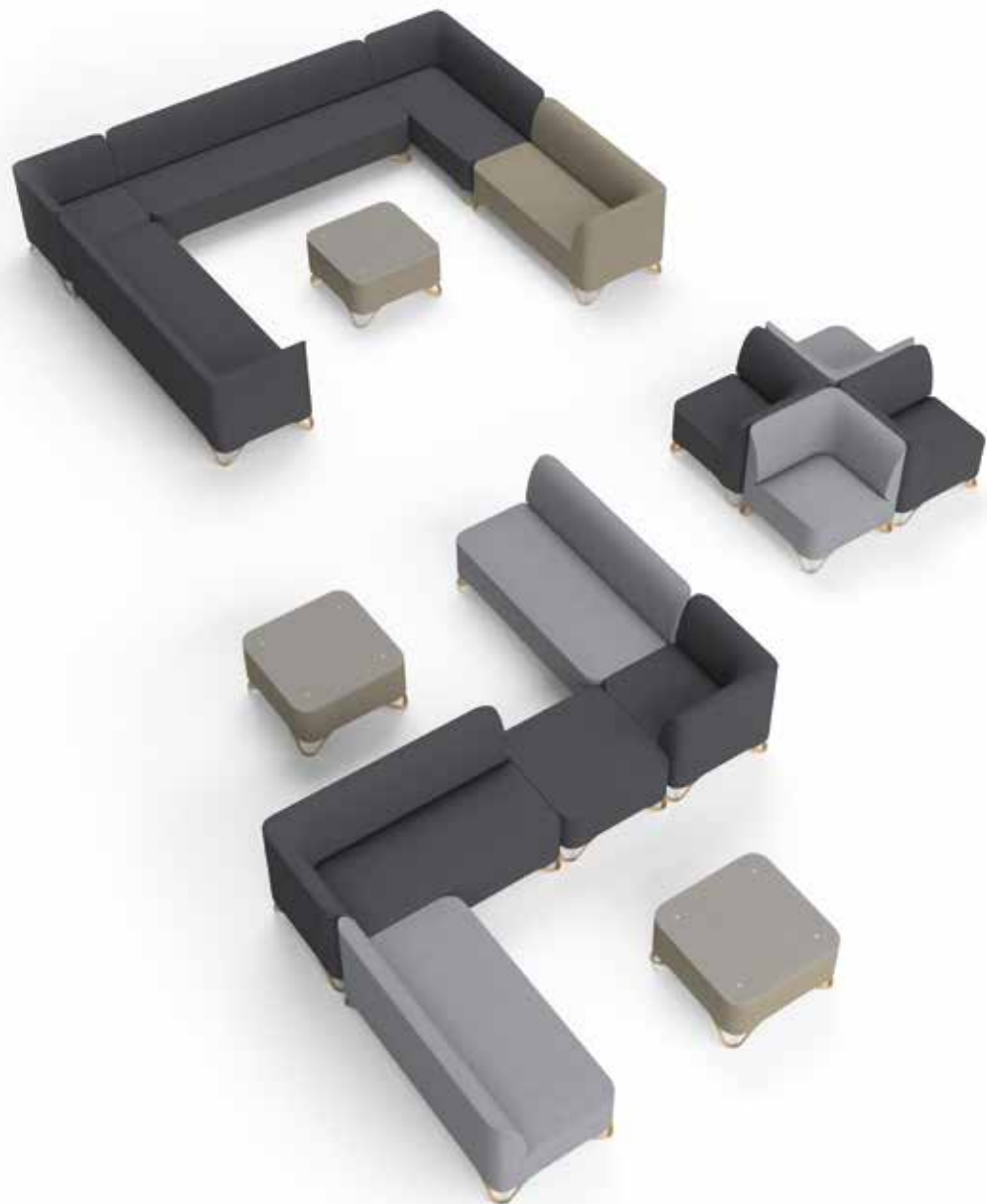






# SoftBox

Design: Paul Brooks



Exceptional modularity and ease of rearrangement.

Option of combining two upholstery colours.





# Sorriso

Design: Studio 1:1 Jarosław Szymański



SORRISO 10R CHROME



SORRISO 10V SATIN



SORRISO 10V SATIN



SORRISO 10F CHROME CASTORS

Seat cushion adds to the comfort.

Version 10R is equipped with gaslift with memory.





# UpDown

Design: Hilary Birkbeck



UPDOWN 10 CHROME



UPDOWN 11 CHROME



UPDOWN 12 CHROME



UPDOWN 20 CHROME



UPDOWN 2R CHROME



UPDOWN 2L CHROME



UPDOWN C40 CHROME



UPDOWN C41 CHROME



UPDOWN C42 CHROME



UPDOWN C43 CHROME

Modular furniture  
that allows to create  
unlimited layouts.

Option of combining two  
colours of upholstery on  
the seat and the backrest.



UPDOWN C10



UPDOWN C20



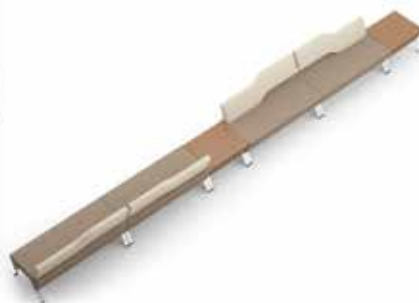
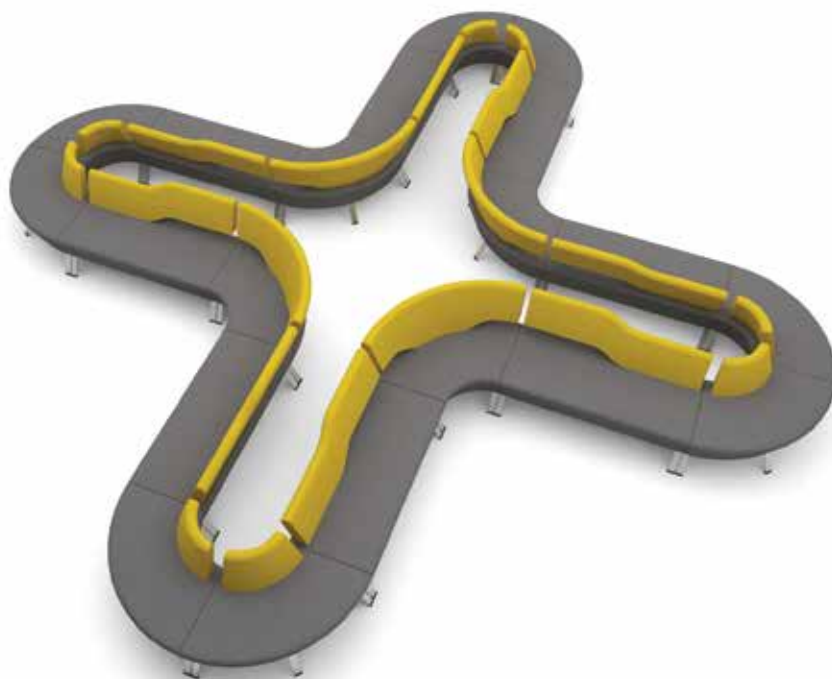
UPDOWN B10 CHROME





# UpDown

Design: Hilary Birkbeck







# Vancouver Box



VANCOUVER BOX VB1 CHROME



VANCOUVER BOX VB2 CHROME

Spacious, comfortable  
armchair.

Metal leg in four colours.



VANCOUVER BOX VB2,5 CHROME



# Vancouver Lite



VANCOUVER LITE VL1 V CHROME



VANCOUVER LITE VL1 HW CHROME + VL W1



VANCOUVER LITE VL2 V CHROME



VANCOUVER LITE VL2 HW CHROME + VL W2



VANCOUVER LITE VL2,5 V CHROME



VANCOUVER LITE VL2,5 HW CHROME + VL W2,5

Two types of frame:  
cantilever and 4-legged.

Partition walls to divide  
off the space.





# Vancouver Oto



VANCOUVER OTO VOR2B



VANCOUVER OTO VOR1



VANCOUVER OTO VOS2

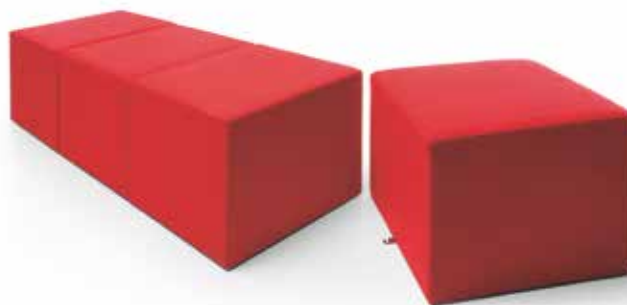


VANCOUVER OTO VOS1B

Compact pouffes in various shapes and sizes.

Versions with glass table top.

Option of joining square pouffes.





# Wall In

Design: Tomek Rygalik, Studio Rygalik



Modular seating system, with the option of additional walls to partition off the space.

Easy to rearrange.

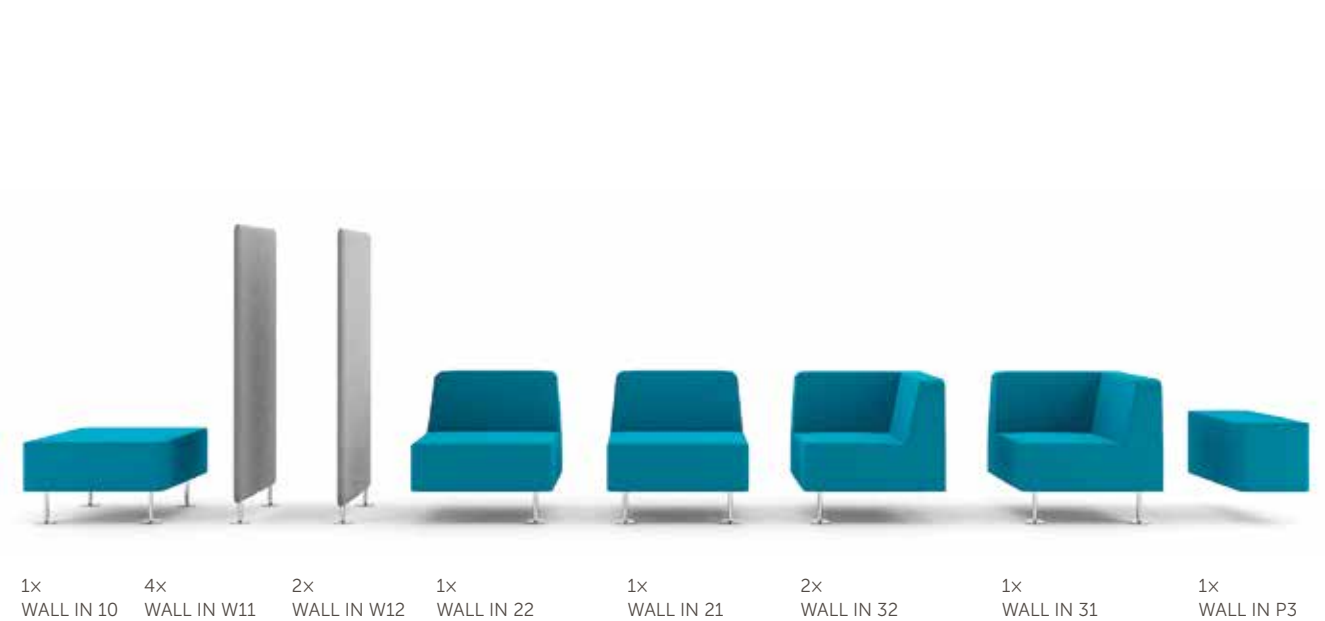






# Wall In

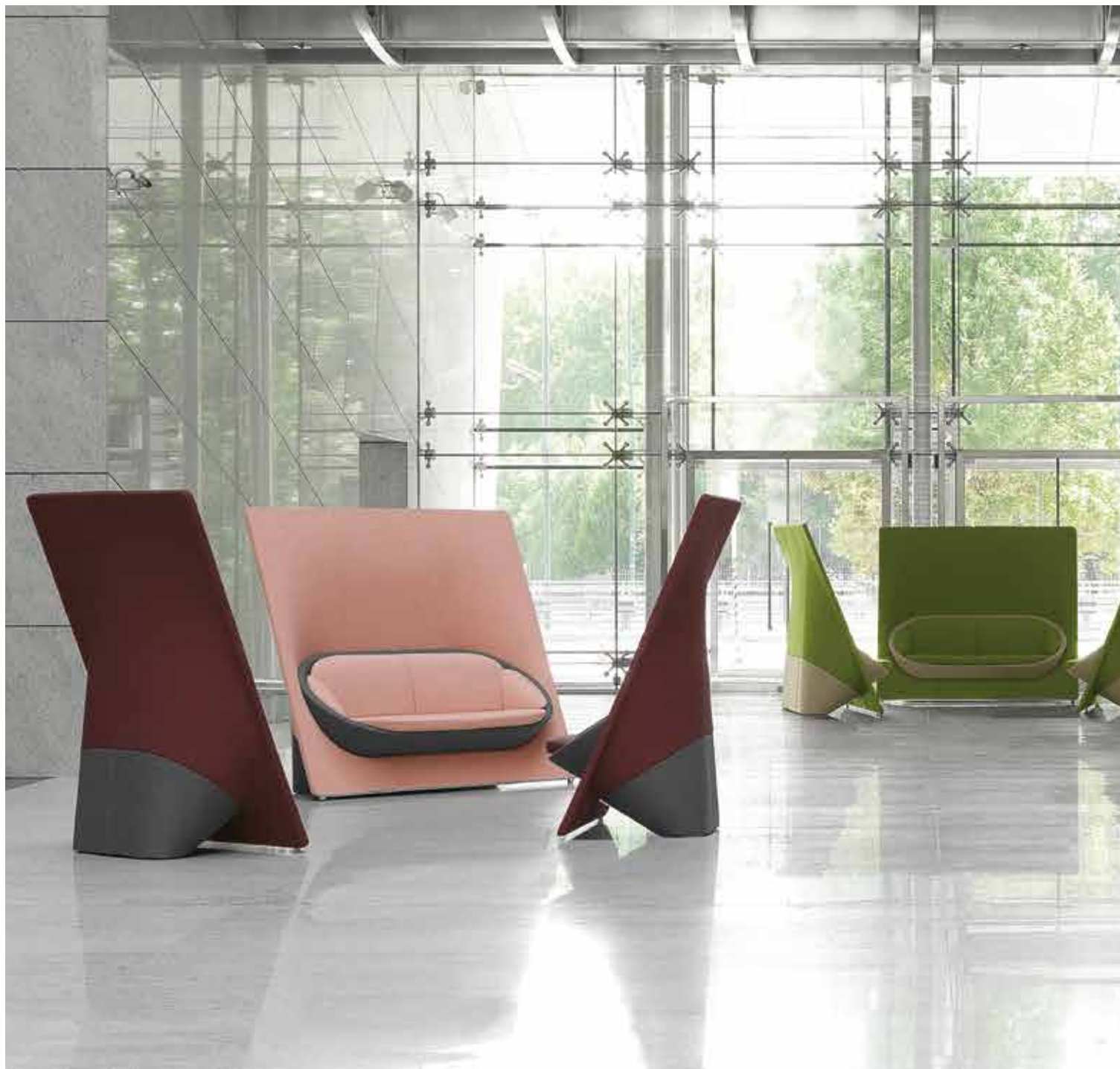
Design: Tomek Rygalik, Studio Rygalik





# Wyspa

Design: ITO Design







# Wyspa

Design: ITO Design



reddot design award  
winner 2015



WYSPA 12



WYSPA 22



WYSPA 32

Option of combining two  
colours of upholstery.

Corner wall with an option  
for use of a side table.









# Tables and coat stands

No room is complete without a solid table to place your computer, papers or a cup of coffee on. It becomes more and more common to use furniture for more than one purpose – not only for work, but also in other contexts, such as company events.

Human interaction is crucial for business therefore the furniture used in company spaces should be a means to make the space practical, comfortable, rearrangeable as well as aesthetic.

It is the little details that decide about the character of the interior.



# Tables and coat stands



Hover 130-131



MyTurn Sofa 132-133



October 134-135



Sensi 136-137



SF/SH/SR/SV/SW 138-139



Vancouver Tables 140-141



Seven 142-143

# Hover

Design: Tomek Rygalik, Studio Rygalik



HOVER S3 RAL 1023 LW



HOVER S2 RAL 1023 G1



HOVER S1 RAL 1023 G1

Coffee tables in three sizes.

Frame in attractive  
RAL-colours.

Table top made of tempered  
glass or durable HPL material.

Available RAL colours





# MyTurn Sofa

Design: Paul Brooks



MYTURN S2H SATIN LW



MYTURN S2V CHROME HM

Tables in two sizes.

Two types of frame:  
cantilever and 4-legged.

Table top made of natural  
veneer or durable HPL material.



MYTURN S1V CHROME HM





# October

Design: Hilary Birkbeck



OCTOBER S2 WOOD



OCTOBER S1 WOOD G1

Tables in two sizes, with an option of milky glass insertion.

Two frame types: wooden and metal.



OCTOBER S1 CHROME G1



# Sensi



SENSI S3 CHROME HMR



SENSI S2 CHROME HMR



SENSI S4 CHROME G1



SENSI S1 CHROME HMR

Conference tables in four sizes, with stacking possibility (4 pcs.).

Table top made of tempered glass, natural veneer or durable HPL material.





# Tables SF/SH/SR/SV/SW



SF30 CHROME



SH20 CHROME



SR10 CHROME

Coffee tables of different heights.

Five types of bases to choose from. Table top made of milk tempered glass.



SV40 SATIN



SW40



# Vancouver Tables



VANCOUVER TABLE S3 SATIN LW



VANCOUVER TABLE SH2 SATIN G1

Coffee tables in two sizes.

Two types of frame: round and square tube.

Table top made of tempered glass, natural veneer or durable HPL material.



VANCOUVER TABLE S2 SATIN LW



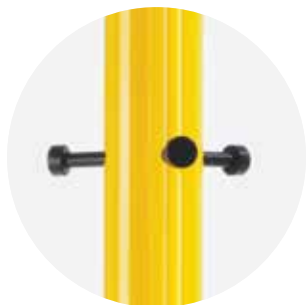
VANCOUVER TABLE SH3 SATIN H MV





# Seven

Design: Tomek Rygalik, Studio Rygalik



Option of combining different colour of frames and hooks.

Available RAL colours



SEVEN RAL 1023 / BLACK





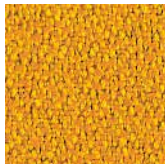


Finishings



Evo

1 price group



EV-18



EV-19



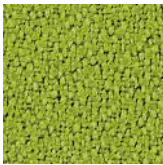
EV-4



EV-5



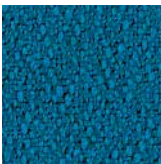
EV-2



EV-20



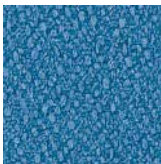
EV-24



EV-23



EV-21



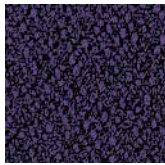
EV-25



EV-9



EV-10



EV-22



EV-14



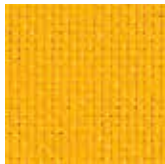
EV-1



EV-11

Next

1 price group



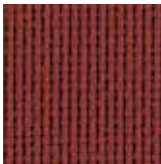
NX-1



NX-3



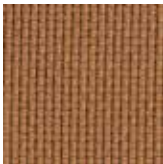
NX-5



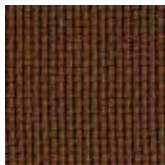
NX-7



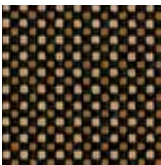
NX-2



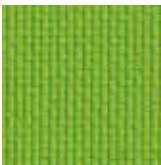
NX-6



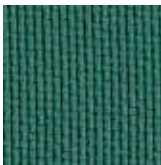
NX-8



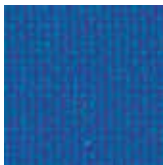
NX-4



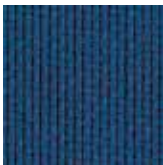
NX-9



NX-11



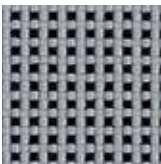
NX-13



NX-15



NX-10



NX-12



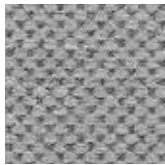
NX-14



NX-16

Flexi

2 price group



FX-14



FX-15



FX-16

Medley

2 price group



ME-1



ME-3



ME-5



ME-13



ME-6



ME-7



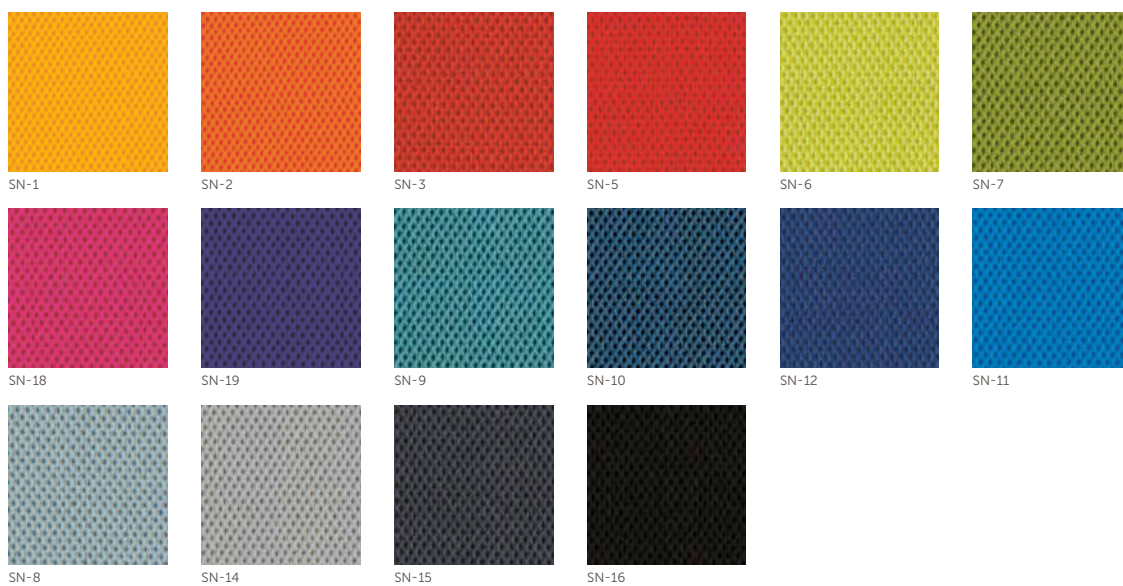
## Softline

2 price group



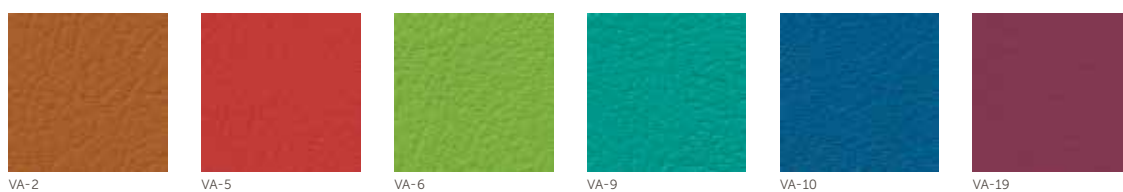
## Sprint

2 price group



## Valencia

2 price group





## Wave

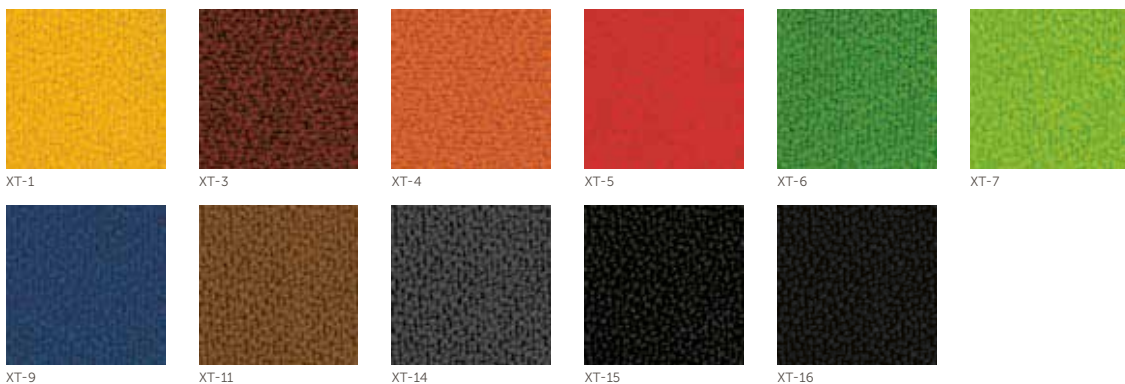
2 price group

Pelikan



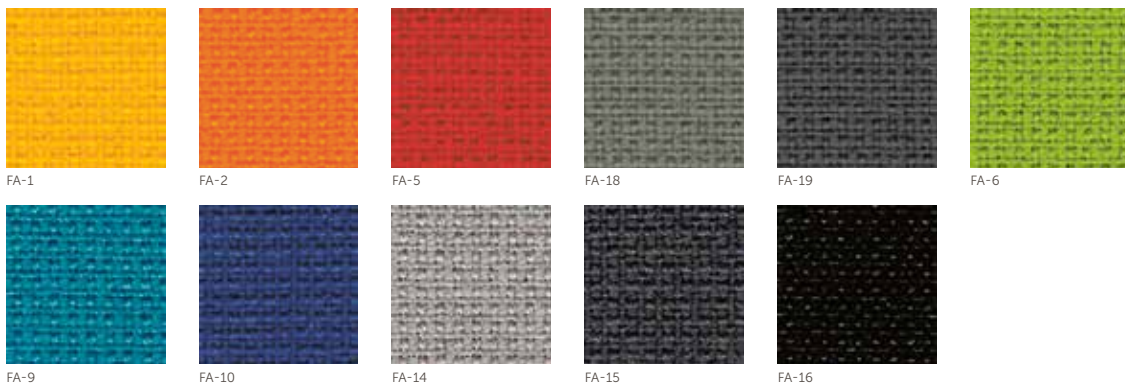
## Xtreme

2 price group



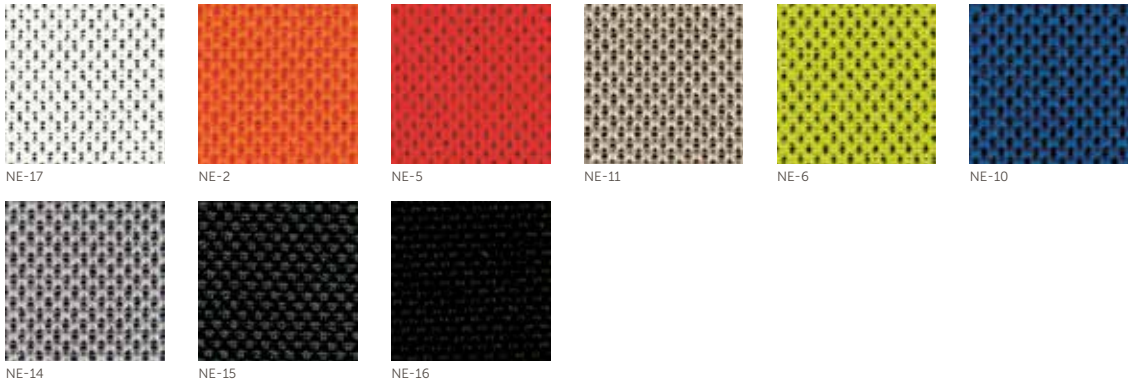
## Fame

3 price group



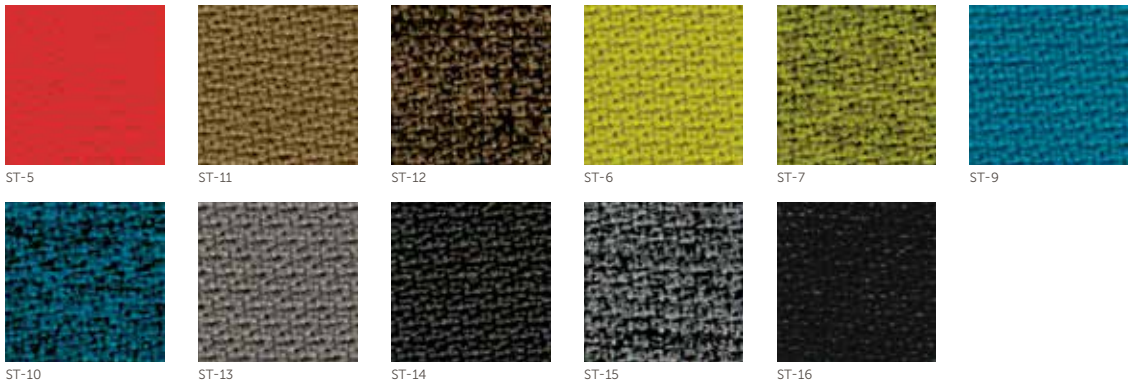
Nexus

3 price group



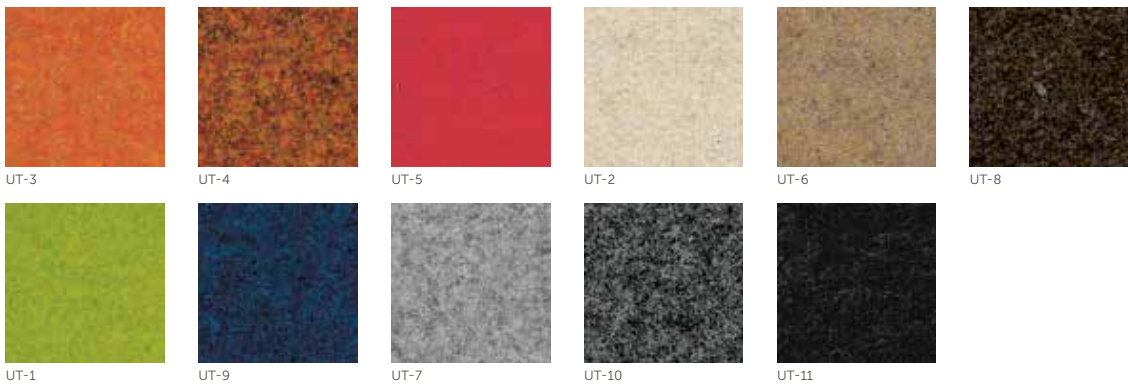
Step

3 price group



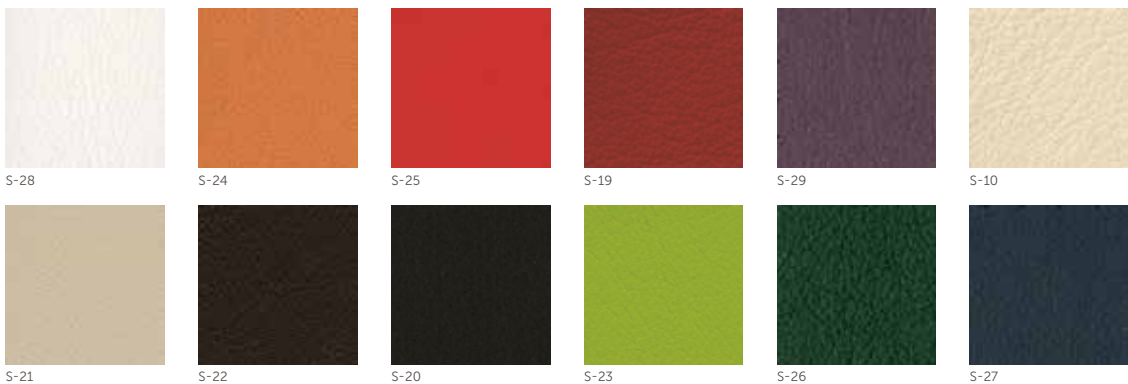
Ultima

3 price group



Leather

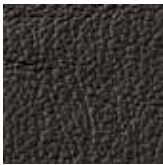
4 price group





Mesh

Ariz



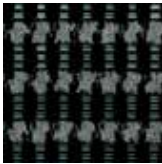
S-16



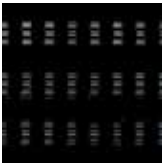
S-18



GZ-26



GZ-20



GZ-21

Mesh

Bit



RU-17



RU-15



RU-16

Mesh

LightUp  
Xenon Net  
Zoo



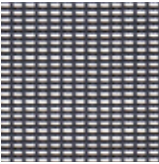
RU-17



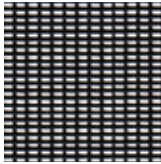
RU-15



RU-16



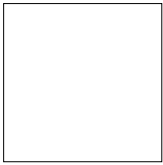
SR-15



SR-16

Plastics

Ariz



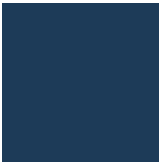
CODE 20



CODE 3020



CODE 512



CODE 516



CODE 514



CODE 517



CODE 01

Plastics

Zoo



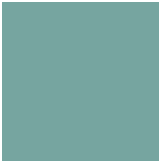
RAL 9016



RAL 1000



RAL 2012



RAL 6034



RAL 7005



RAL 9005

Armrests

Pelikan



RAL 3031



RAL 5024



RAL 6018



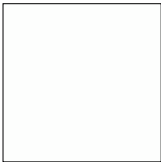
RAL 7043



RAL 9005

RAL

Hover  
Seven



RAL 9003



RAL 1023



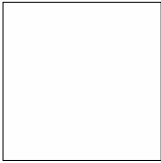
RAL 3020



RAL 5018

HPL

Hover, MyTurn Sofa,  
Sensi, SoftBox,  
Tables SH/SR, Vancouver  
Tables, Wall In, Zoo



LW01



LW02



LW04

Wood

Fan, October, Sensi,  
SoftBox



H8



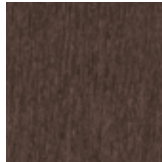
H6



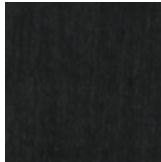
H7



H12



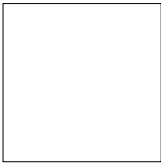
H11



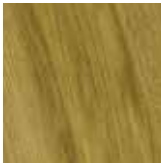
H5

Wood

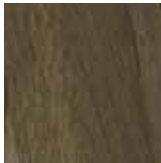
Wyspa



H13



HO6



HO12



HO11

Natural veneers

MyTurn Sofa, SoftBox,  
UpDown



HM10



HM11



HM12



HM30



HM20

Natural veneers

Sensi, Vancouver Tables



HMR



HMZ



HMOV



# CREATIVE EDITION

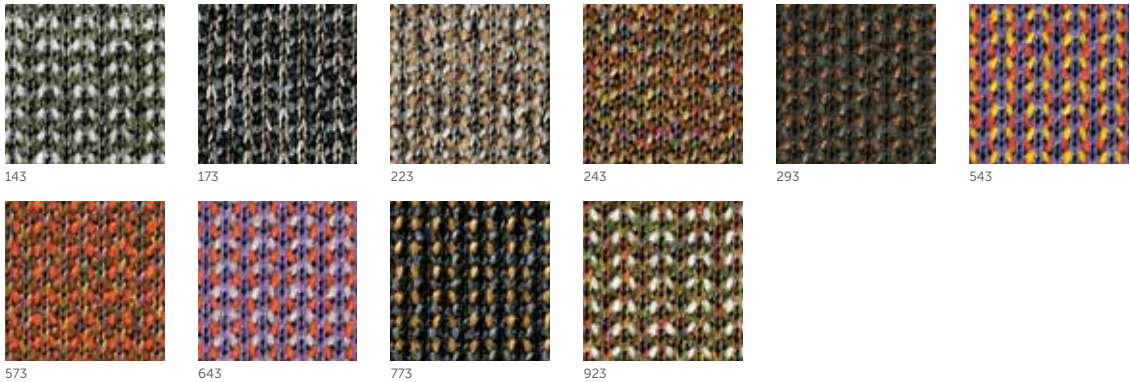
Creative Edition is a programme designed according to the latest trends. We have created it, having in mind interior designers as well as all those who appreciate a good design and look for off-beat solutions. Creative Edition gives you an opportunity to design unique, custom-made spaces. It uses fabrics specially selected from renowned European suppliers such as Kvadrat or Bute. The wide range of colours in upholstery that boasts exceptional weave gives our collection a new and unique character.





Max Knit

(Kvadrat)

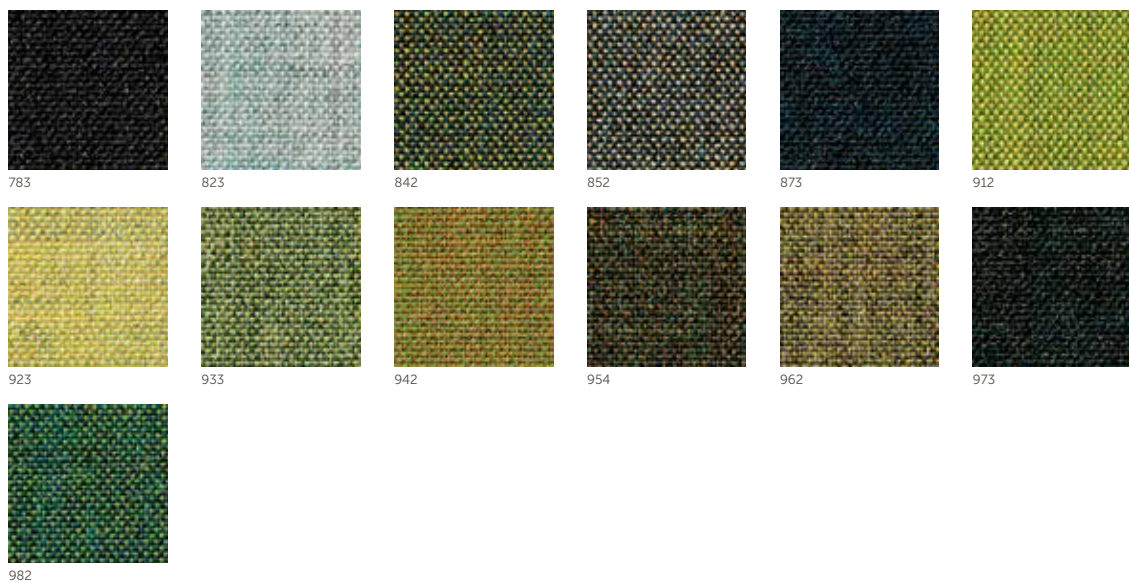


Remix 2

(Kvadrat)





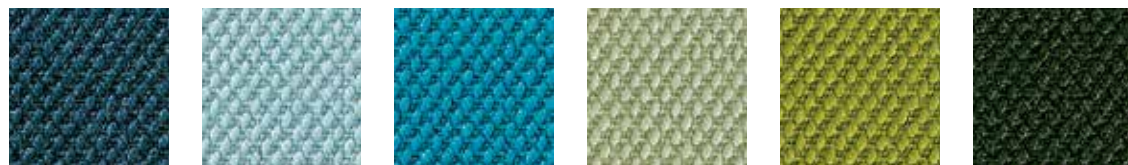


## Steelcut 2

(Kvadrat)







780

820

835

935

950

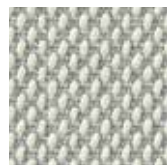
975



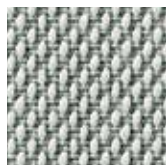
985

## Steelcut Trio 2

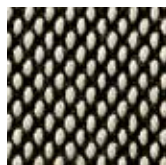
(Kvadrat)



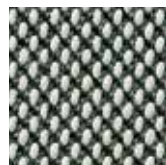
105



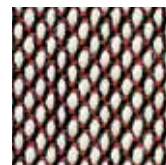
113



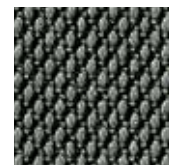
124



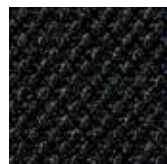
133



144



153



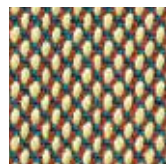
195



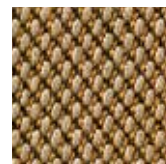
205



213



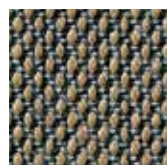
225



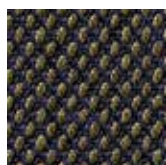
235



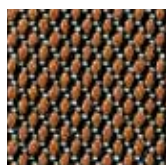
245



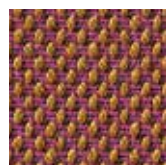
253



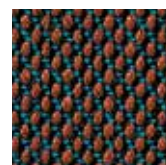
283



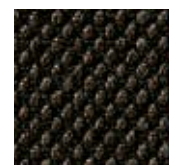
325



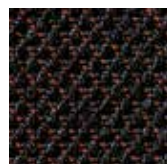
333



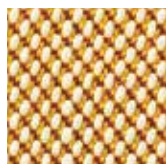
353



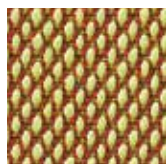
383



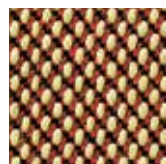
395



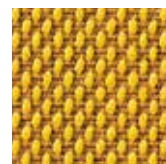
413



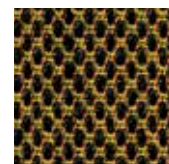
415



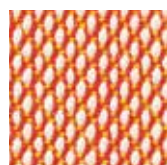
425



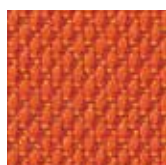
453



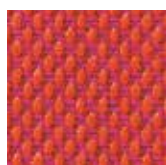
465



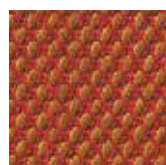
515



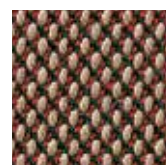
533



553



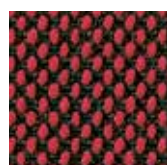
565



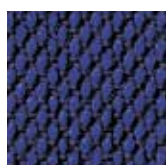
645



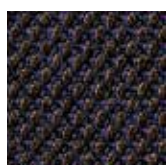
653



665



675



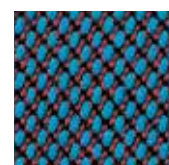
683



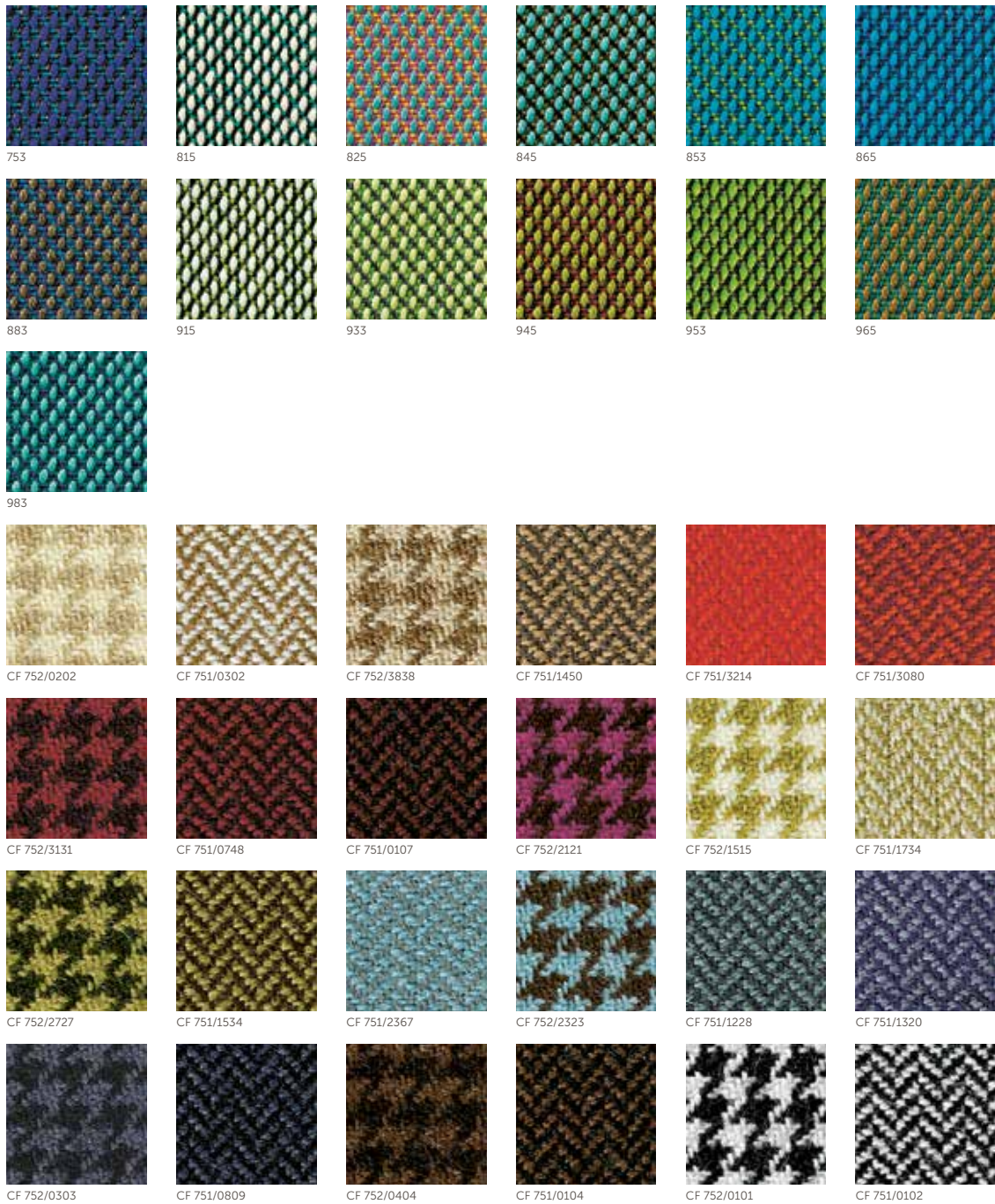
713



733



745



Troon  
(CF 752)  
Turnberry  
(CF 751)

(Bute)

# Collections review





Ariz      visitor chairs      60-61



Bit      visitor chairs      62-63



Fan      visitor chairs      64-65      soft seating      86-87





## Hover

soft seating

88-89

tables and coat stands

130-131



## LightUp

task chairs

42-45



## Motto

task chairs

46-47



## MyTurn

executive chairs

32-35

task chairs

48-49

visitor chairs

66-67



## MyTurn Sofa

soft seating

90-91

tables and coat stands

132-133



## Nu

visitor chairs

68-69

soft seating

92-95



## October

soft seating

96-97

tables and coat stands

134-135



## Pelikan

soft seating

98-101



## Raya

task chairs

50-51

visitor chairs

70-71



Sensi

visitor chairs 72-73

tables and coat stands 136-137



Seven

tables and coat stands 142-143



## SoftBox

soft seating

102-105



## Sorriso

soft seating

106-107



## Tables SF/SH/SR/SV/SW

tables and coat stands

138-139



## UpDown

soft seating

108-111



## Vancouver Box

soft seating

112-113



## Vancouver Lite

soft seating

114-115



## Vancouver Oto

soft seating

116-117



## Vancouver Tables

tables and coat stands

140-141



## Wall In

soft seating

118-121





Wyspa      soft seating      122-125



Xenon      executive chairs      36-37      task chairs      52-53      visitor chairs      74-75



Xenon Net      task chairs      54-55      visitor chairs      76-77



Zoo      visitor chairs      78-81





felt glides



teflon glides



quilting



two-colour upholstery



decorative threads



left-sided table top



right-sided table top



joining in rows



hanger



x10

stacking (quantity)



x15

stacking on trolley (quantity)



24 hours, 7 days a week



150kg

maximum user weight: 150 kg



Ergonomics approved



GS / Safety tested



Quality Office



The Blue Angel



