

CUMULUS lounge seating

Design by Kazuko Okamoto



FEATURES

- One or two seater
- Three heights of the backrests
- Combination of different colours of backrests and seats

QUALITY STANDARD

- EN 16139:2013

TECHNICAL INFORMATION

Type

- Modular lounge seating system.

Legs

- Metal frame feet (rectangular tube 30x30x2 mm) with plastic glides.

Seats

- Seats made from chipboard 15 mm, plywood 4 and 15 mm;
- Upper part is foam coated HR5560 (55 kg/m³);
- Upholstered with fabric.

Armrests and backrests

- Armrests and backrests made of MFP and plywood 15 mm;
- Softened with HR molded foam details (60 kg/m³);
- Upholstered with fabric.

Connecting brackets

- Connecting brackets ("U" shape) made from metal sheet (3 mm) for modules with right or left armrests / panels.

Swivel table

- Swivel table fixed by bolts to left or right side of the frame – for one-seater or to the centre of the frame – for two-setter;
- Top made from 19 mm MDF laminated by HPL with painted / lacquered edges;
- Table holder ("L" shape) made from metal tube Ø25x2 mm.

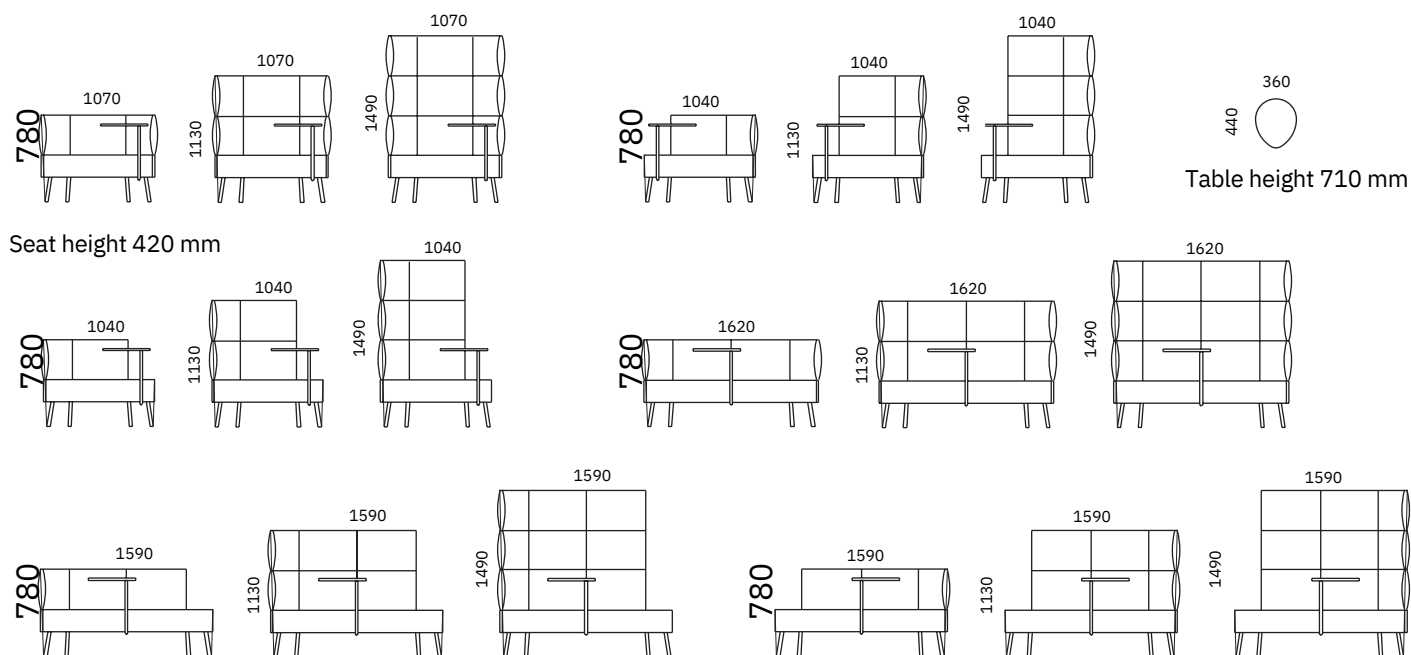
MATERIALS

- Fabric: VELITO; STEP/STEP Melange, SYNERGY;
- Metal: E (white), T1 (dark grey);
- HPL: M (white), N1 (dark grey).

GUARANTEE

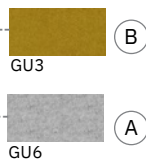
- 3 years

RANGE



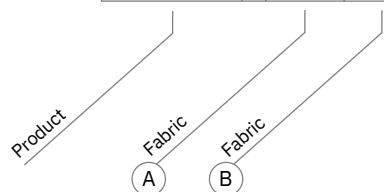
ORDERING EXAMPLE

Code structure



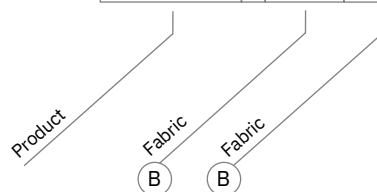
Two colour armchair

SCA122 - GT8 GU3



One colour armchair

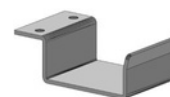
SCA122 - GU3 GU3



Optional



Swivel table



Connecting brackets