

Seating

.mdd



New School

by Form Us With Love

To create opportunities through small means, it offers a vast number of combinations tailored to the way you want it.

Find possibilities within its humane and simple construction to make a complete range of typologies for the kinds of activities happening today within the many spaces from cafe to home and office. Growing on the classic school chair, New School provides a range

of options available to meet the varied ergonomic requirements of modern office environment – add castors for mobility, headrest for increased comfort or choose an option with armrest to support a range of arm postures.

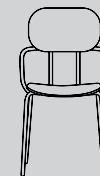


458 mm | 18"



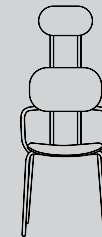
N1N01

535 mm | 21 1/8"



N1N01 with armrest

535 mm | 21 1/8"



N2N01

603 mm | 23 6/8"

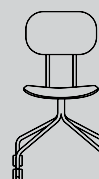


N1N04H

817 mm | 32 1/8"

817 mm | 32 1/8"

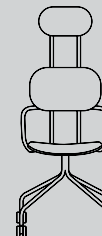
1118 mm | 46 6/8"



N1N03K

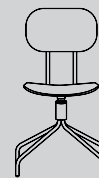


N1N03K with armrest

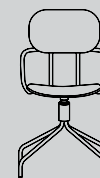


N2N03K

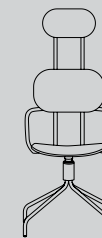
995 mm | 39 1/8"



N1N07

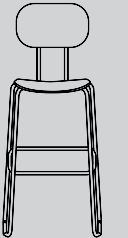


N1N07 with armrest



N2N07

1175 mm | 46 2/8"



N1N05H





N1N03K with armrest
550 / 550 / 817
21 5/8" / 21 5/8" / 32 1/8"

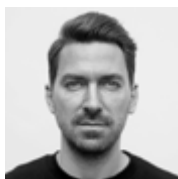


Designers



**Gudmundur
Ludvik**

I am intrigued by the balance between simplicity and complexity. Exploring challenges through multiple perspectives helps me in understanding and reducing them to the core and transforming into simple and intuitive solutions.



**Dirk
Winkel**

I love exploring new materials and production processes, and I am driven by belief in the beauty of a deeply geometrical formal purism. Careful consideration of every single radius, dimension and proportion of a design is the key to a sustainable formal expression.



**Form Us
With Love**

Good design is a hard question—it's in the eye of the beholder. But if you manage to put a material on the right spot, in both an interior or a product, you come quite for.



**Krystian
Kowalski**

As a hands-on designer my work process combines a full-scale models and prototypes with technology research and advance cad modelling. This methodical approach is focused on revealing the essence of each design. I believe experiencing the product is the only way to develop valuable furniture.



**Javier
Cuñado**

In a smart working environment, each team member should be supported to improve their efficiency.



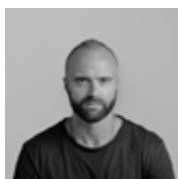
**Beza
Projekt**

We cross the border between the world of utility items and the world of conceptual artefacts. Each project is based on the individual approach to the client's needs and tells a different story.



**Andreas
Krob**

A good office chair should be intuitive in how it's used.



**Dymitr
Malcew**

I'm inspired by things that happen on the periphery and at the intersection of disciplines, cultures and experiences. Regardless of the scale, form or style of the product, designing "experiences" is always the priority. Frame, material and detail is a form of communication with the user.

mdd.eu

RADIUS
OFFICE

info@radiusoffice.com
www.radiusoffice.com